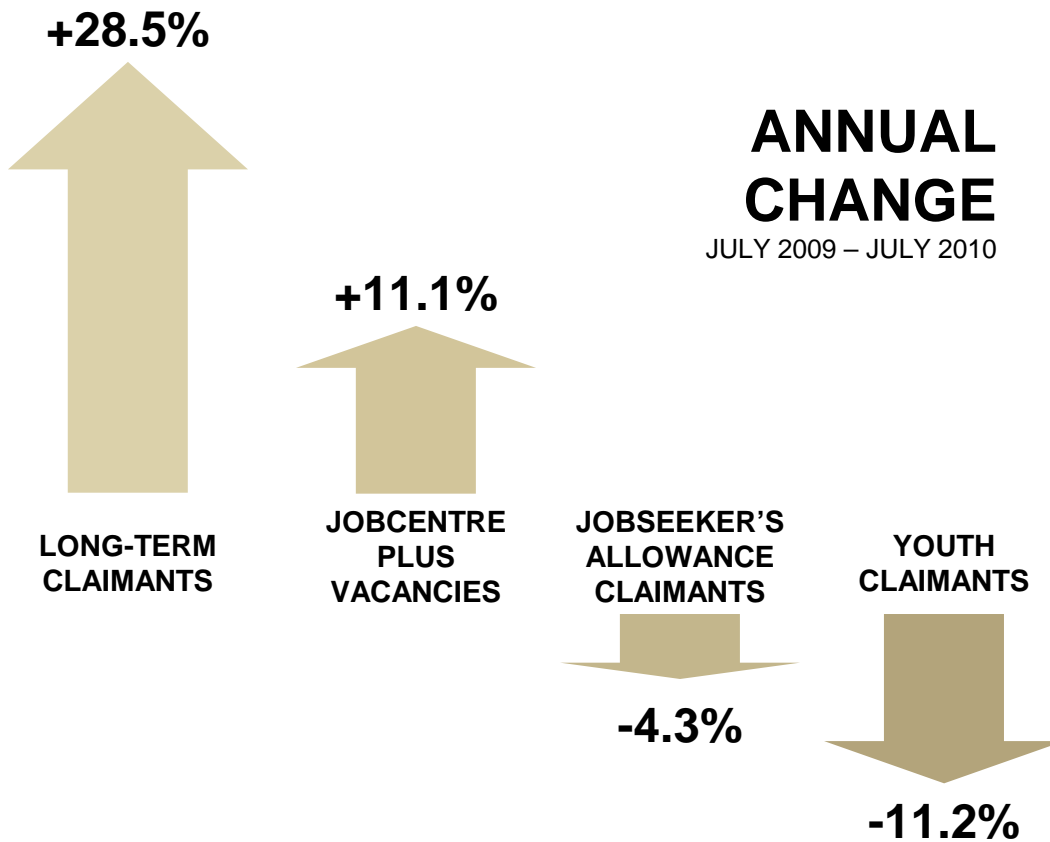


unemployment **MONITOR**

GREATER MANCHESTER, AUGUST 2010
USING JULY 2010 DATA



SOURCE: JSA CLAIMANT COUNT, DWP, 2010; JCP NOTIFIED VACANCIES, JCP, 2010

IN THIS EDITION:

- **TOTAL JSA CLAIMANTS CONTINUES TO FALL, THOUGH THE CHANGE IS MARGINAL**
- **LONG-TERM JOBSEEKER NUMBERS FALL AT THE HIGHEST MONTHLY RATE SINCE OCTOBER 2007**
- **YOUTH CLAIMANTS RISE AS EDUCATION LEAVERS SIGN ON**
- **JOB OPPORTUNITIES FALL MONTH-ON-MONTH BUT SHOW A SIGNIFICANT ANNUAL GROWTH**

CONTACT:

t: 0161 237 4024

e: christopher.pope@neweconomymanchester.com

w: neweconomymanchester.com

twitter: @mancmonitor

CONTENTS

MONITOR FOCUS	3
JOBSEEKER'S ALLOWANCE CLAIMANTS	4
TOTAL CLAIMANTS	4
CLAIMANTS BY GENDER	5
LONG-TERM CLAIMANTS	6
YOUTH CLAIMANTS	7
JOBSEEKER'S ALLOWANCE FLOWS	8
TOTAL CLAIMANT FLOWS	8
OCCUPATION	9
REASON FOR OFF-FLOWS	10
JOBCENTRE PLUS VACANCIES	11
TOTAL VACANCIES	12
OCCUPATION AND INDUSTRY	13
TECHNICAL NOTE	13
GLOSSARY	14
SOURCES	15

Monitor FOCUS

Jobs queue remains stationary

Official figures released by DWP show that unemployment remained broadly static across Greater Manchester in July 2010. The number of jobseeker's allowance claimants in Greater Manchester fell by just 121 to 74,325 in July 2010 - a fall of only 0.2% on June's figures, a significantly slower reduction compared to the first half of the year. Jobseeker's allowance claimants decreased in Greater Manchester at the same rate as the national average. 4.3% of Greater Manchester's working age population are now claiming unemployment benefit¹.

The fall in the number of jobseeker's allowance claimants was greatest in Rochdale (down 2.4%) and Tameside (down 0.8%). Bolton, Manchester, Salford and Trafford all experienced rising numbers of job seekers.

New Economy estimate that total unemployment in Greater Manchester – which differs from the jobseeker's allowance count as not all unemployed people claim benefits – fell over the last quarter to 121,340 between April and June, a quarterly reduction of around 6.8%. Comparatively, total unemployment has fallen nationally by 2.0%.

Figures released simultaneously by Jobcentre Plus show that the number of vacancies reported to them in Greater Manchester has increased by 11.1% compared with July 2009. Jobcentre Plus now have 15,750 active vacancies on their books.

Figure 1: Annual and Monthly Change in JSA and Vacancy Levels, July 2008 – July 2009 and June 2009 – July 2009

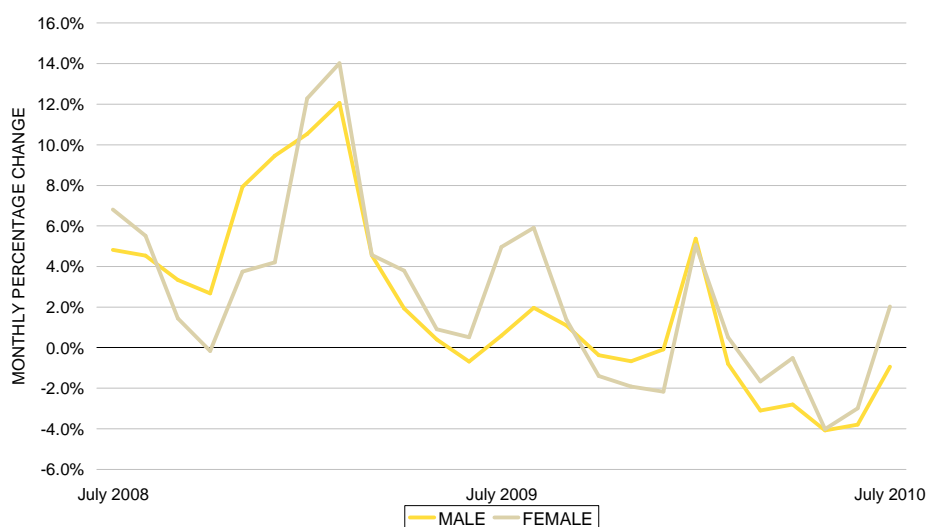
Area	Total JSA Claimants			Long-term (6 months +) JSA Claimants			Youth (16-24) JSA Claimants			JCP Reported Vacancies		
	Number	Annual Change	Monthly Change	Number	Annual Change	Monthly Change	Number	Annual Change	Monthly Change	Number	Annual Change	Monthly Change
Greater Manchester	74,325	-4,967 (-6.3%)	-121 (-0.2%)	29,730	6,600 (28.5%)	-1,955 (-6.2%)	23,105	-2,905 (-11.2%)	145 (0.6%)	15,750	1,579 (11.1%)	-3,238 (-17.1%)

Male claimant numbers fall as female claimant numbers rise

Male claimant numbers have fallen this month by 0.9% - a marginal decrease, compared to a fall of 3.8% last month. Conversely, female claimant numbers are now beginning to rise, and this month have grown by 2.0% - in comparison to a 3.0% fall in female claimants last month.

Female claimant numbers appear more erratic than male claimant numbers largely as a result of the smaller numbers of female claimants. Yet a growth in female claimants this month is a sign of a continuing trend, that is likely to see a fall again only after the summer months.

The remainder of this document provides detailed analysis of jobseeker's allowance and vacancy data across Greater Manchester.



Source: Claimant Count, DWP, 2010;

¹ As of July 2010, claimant rates are based on the 16-64 age range, rather than the working age population 16-64m/59f).

JOBSEEKER'S ALLOWANCE CLAIMANTS: TOTAL CLAIMANTS

Figure 1: JSA Claimant Count by rate, July 2009 – July 2010

District	Ward	JSA Claimants			
		Number	Monthly Change (%)	Annual Change (%)	Rate
		Jul 10	Jun10 – Jul10	Jul09 – Jul10	Jul 10
Rochdale	Central and Falinge	812	0.4%	-3.7%	12.5%
Stockport	Brinnington	686	-1.6%	0.9%	10.9%
Oldham	Coldhurst	697	-2.4%	3.7%	9.3%
Manchester	Moss Side	937	5.8%	15.0%	9.1%
Salford	Langworthy	353	-3.0%	2.0%	8.8%
Manchester	Benchill	651	-2.5%	9.0%	8.7%
Salford	Broughton	457	-2.6%	5.5%	8.7%
Manchester	Newton Heath	654	0.9%	8.5%	8.4%
Oldham	St. Marys	597	-0.8%	3.1%	8.4%
Wigan	Ince	518	1.8%	3.8%	8.0%
Bolton		7,336	0.5%	-8.6%	4.4%
Bury		4,070	-0.6%	-11.5%	3.5%
Manchester		17,493	0.2%	0.9%	5.0%
Oldham		6,480	-0.4%	-7.6%	4.7%
Rochdale		6,640	-2.4%	-11.5%	5.1%
Salford		7,312	0.6%	-0.1%	4.8%
Stockport		5,857	-0.8%	-9.3%	3.2%
Tameside		6,223	-0.8%	-7.3%	4.4%
Trafford		4,410	2.1%	-4.6%	3.2%
Wigan		8,504	-0.2%	-12.3%	4.3%
Greater Manchester		74,325	-0.2%	-6.3%	4.3%
North West		177,067	-0.1%	-10.4%	4.0%
United Kingdom		1,441,035	-0.2%	-8.4%	3.6%

Source: Claimant Count, DWP, 2010

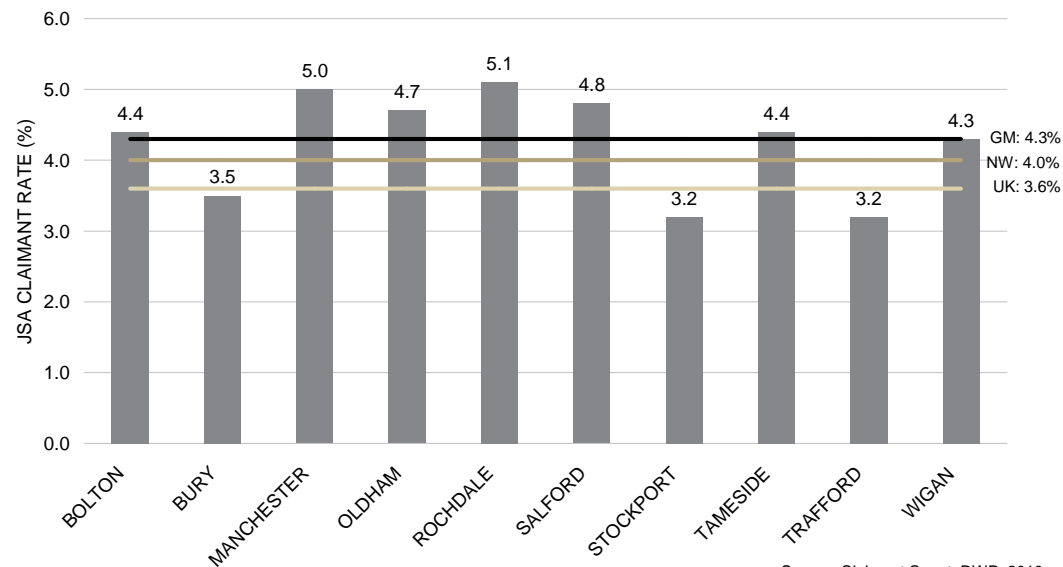
The number of JSA claimants in Greater Manchester fell by just 121 (0.2%) to 74,325 in July 2010, a 4.3% claimant rate. Comparatively, the North West (4.0%) and UK (3.6%) continue to experience lower claimant rates.

The highest JSA claimant rate was experienced in Rochdale (5.1%). Central and Falinge in Rochdale continued to have the highest ward claimant rate (12.5%), rising by 0.4% this month.

Four of the GM authorities experienced a monthly increase in JSA claimants, with Trafford experiencing the greatest increase (2.1%). The monthly reduction in Greater Manchester (0.2%) was equivalent to the national average (0.2%).

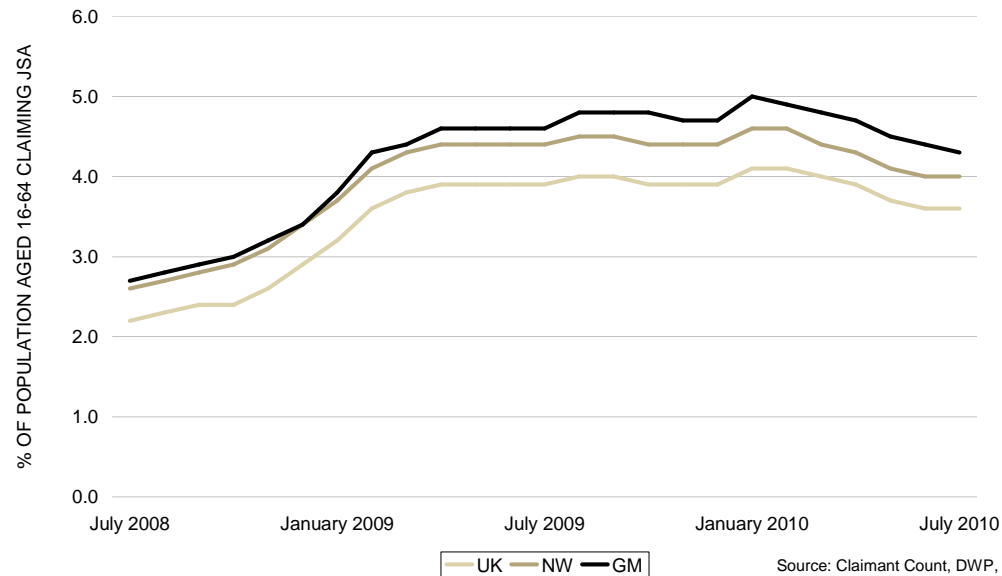
As can be seen from figure 3, claimant rates have been falling since January. However, claimant rates are still much higher than they were two years ago.

Figure 2: JSA Claimant Rate by district, July 2010



Source: Claimant Count, DWP, 2010

Figure 3: Historical JSA Claimant Rate July 2008 – July 2010



Source: Claimant Count, DWP, 2010

JOBSEEKER'S ALLOWANCE CLAIMANTS: CLAIMANTS BY GENDER

Figure 4: Male JSA Claimant Count by rate, July 2009 – July 2010

District	Ward	Male JSA Claimants			
		Number	Monthly Change (%)	Annual Change (%)	Rate
		Jul 10	Jun10 – Jul10	Jul09 – Jul10	Jul 10
Rochdale	Central and Falinge	633	-0.3%	-2.8%	17.9%
Stockport	Brinnington	519	-2.1%	-0.6%	16.3%
Manchester	Benchill	487	0.0%	5.6%	14.3%
Oldham	Coldhurst	530	-2.8%	1.3%	13.5%
Manchester	Moss Side	690	4.9%	14.2%	13.2%
Salford	Langworthy	261	-0.4%	-6.5%	12.5%
Manchester	Newton Heath	476	0.2%	1.7%	12.3%
Salford	Broughton	342	-1.7%	8.2%	12.3%
Wigan	Norley	363	3.4%	-14.4%	12.2%
Oldham	St. James	241	-8.4%	-11.1%	11.9%
Bolton		5,423	0.6%	-10.5%	6.5%
Bury		2,959	-0.9%	-13.2%	5.1%
Manchester		12,768	-0.8%	-1.3%	7.0%
Oldham		4,789	-1.4%	-9.5%	7.0%
Rochdale		4,819	-2.8%	-13.4%	7.3%
Salford		5,444	0.0%	-1.5%	7.0%
Stockport		4,280	-1.8%	-10.8%	4.8%
Tameside		4,575	-1.1%	-9.2%	6.6%
Trafford		3,177	1.0%	-7.8%	4.6%
Wigan		6,247	-1.8%	-14.7%	6.3%
Greater Manchester		54,481	-0.9%	-8.3%	6.3%
North West		129,185	-1.1%	-13.0%	5.8%
United Kingdom		1,018,863	-1.5%	-11.5%	5.1%

Source: Claimant Count, DWP, 2010

The male JSA claimant count decreased by 515 (0.9%) to 54,481 in GM in July 2010 (a 6.3% claimant rate). This rate was higher than the North West (5.8%) or the UK (5.1%). Greater Manchester's male claimant levels fell by 0.9% this month – less than the fall in the North West (1.1%) or the fall across the UK (1.5%).

Across the local authorities, Rochdale (7.3%) now has the highest male claimant rate, followed by Salford, Manchester and Oldham (all 7.0%). These three authorities take up 7 of the top 10 wards by male claimant rate.

Two authorities saw monthly increases in the male claimant count – Trafford (1.0%) and Bolton (0.6%), whilst the Salford claimant rate remained level.

Figure 5: Female JSA Claimant Count by rate, July 2009 – July 2010

District	Ward	Female JSA Claimants			
		Number	Monthly Change (%)	Annual Change (%)	Rate
		Jul 10	Jun10 – Jul10	Jul09 – Jul10	Jul 10
Rochdale	Central and Falinge	179	2.9%	-6.8%	6.0%
Stockport	Brinnington	167	0.0%	5.7%	5.4%
Manchester	Moss Side	247	8.3%	17.1%	4.9%
Oldham	St. Marys	169	5.0%	6.3%	4.8%
Salford	Langworthy	92	-9.8%	37.3%	4.8%
Oldham	Coldhurst	167	-1.2%	12.1%	4.7%
Salford	Ordsall	111	6.7%	29.1%	4.7%
Salford	Broughton	115	-5.0%	-1.7%	4.6%
Manchester	Newton Heath	178	2.9%	31.9%	4.5%
Wigan	Ince	145	9.8%	21.8%	4.4%
Bolton		1,913	0.5%	-2.7%	2.3%
Bury		1,111	0.2%	-6.4%	1.9%
Manchester		4,725	2.9%	7.4%	2.8%
Oldham		1,691	2.5%	-1.7%	2.4%
Rochdale		1,821	-1.5%	-6.2%	2.8%
Salford		1,868	2.1%	4.0%	2.6%
Stockport		1,577	2.3%	-4.9%	1.7%
Tameside		1,648	0.2%	-1.4%	2.3%
Trafford		1,233	4.8%	4.4%	1.8%
Wigan		2,257	4.7%	-5.0%	2.3%
Greater Manchester		19,844	2.0%	-0.3%	2.3%
North West		47,882	2.7%	-2.6%	2.1%
United Kingdom		422,172	3.2%	0.1%	2.1%

Source: Claimant Count, DWP, 2010

The female JSA claimant count increased by 394 (2.0%) to 19,844 in GM in July 2010 (a 2.3% claimant rate). This rate was higher than the North West and the UK (both 2.1%), but closer to the national average than the male claimant rate. Greater Manchester's female claimant rate rose at a slower pace (2.0%) than the national (3.2%) and regional level (2.7% increase).

Across the local authorities, the highest female claimant rate was experienced in Rochdale and Manchester (both 2.8%). Manchester has seen the greatest annual increase in female claimants of the districts – a 7.4% rise from 4,400 claimants in July 2009 to 4,725 in July 2010. Rochdale by comparison experienced a 6.2% decrease.

Only Rochdale experienced a monthly decrease in its female claimant count, whilst Trafford experienced the greatest increase of 4.8% to 1,233 female claimants.

JOBSEEKER'S ALLOWANCE CLAIMANTS: LONG-TERM CLAIMANTS

Figure 6: Long-term JSA claimants (over 6 months) by proportion of total JSA claimants, July 2009 – July 2010

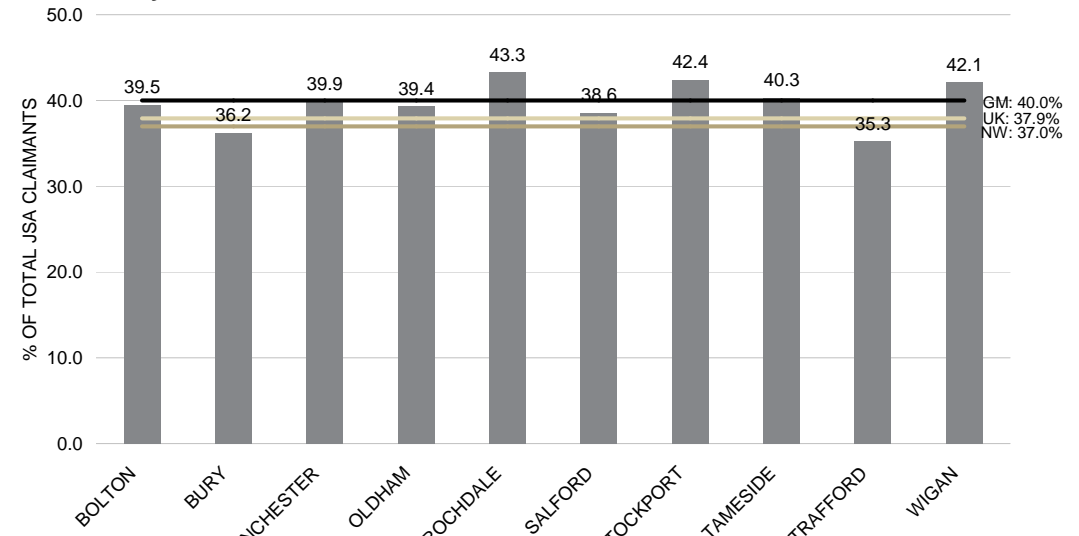
District	Ward	Long-term JSA Claimants			
		Number	Monthly Change (%)	Annual Change (%)	% of total JSA
		Jul 10	Jun10 – Jul10	Jul09 – Jul10	Jul 10
Stockport	Brinnington	380	-5.0%	49.0%	55.4%
Tameside	Hyde Godley	200	-4.8%	42.9%	51.7%
Manchester	Baguley	230	2.2%	70.4%	51.1%
Wigan	Norley	230	-6.1%	12.2%	50.1%
Manchester	Benchill	320	-1.5%	52.4%	49.2%
Tameside	Denton South	160	-8.6%	23.1%	48.9%
Salford	Walkden North	260	-3.7%	62.5%	48.9%
Wigan	Newtown	230	-8.0%	9.5%	48.8%
Rochdale	Central and Falinge	395	-8.1%	11.3%	48.6%
Rochdale	Smallbridge and Wardleworth	275	-11.3%	22.2%	48.5%
Bolton		2,895	-9.2%	19.6%	39.5%
Bury		1,475	-9.2%	17.1%	36.2%
Manchester		6,985	-4.6%	38.9%	39.9%
Oldham		2,550	-5.4%	28.8%	39.4%
Rochdale		2,875	-7.9%	19.0%	43.3%
Salford		2,820	-6.2%	37.9%	38.6%
Stockport		2,485	-4.1%	35.4%	42.4%
Tameside		2,510	-6.3%	27.1%	40.3%
Trafford		1,555	-4.3%	44.7%	35.3%
Wigan		3,580	-6.6%	15.7%	42.1%
Greater Manchester		29,730	-6.2%	28.5%	40.0%
North West		65,485	-5.9%	8.6%	37.0%
United Kingdom		546,680	-5.2%	17.2%	37.9%

Source: Claimant Count, DWP, 2010

The long-term (over 6 months) JSA claimant count stood at 29,730 in GM in July 2010 (40.0% of the total JSA claimant level). This was higher than the North West (37.0%) and UK (37.9%) proportions. Rochdale had the highest proportion of long-term claimants (43.3%), with two of its wards within the top ten highest proportions. In four wards across Greater Manchester, more than half of all claimants are long-term claimants.

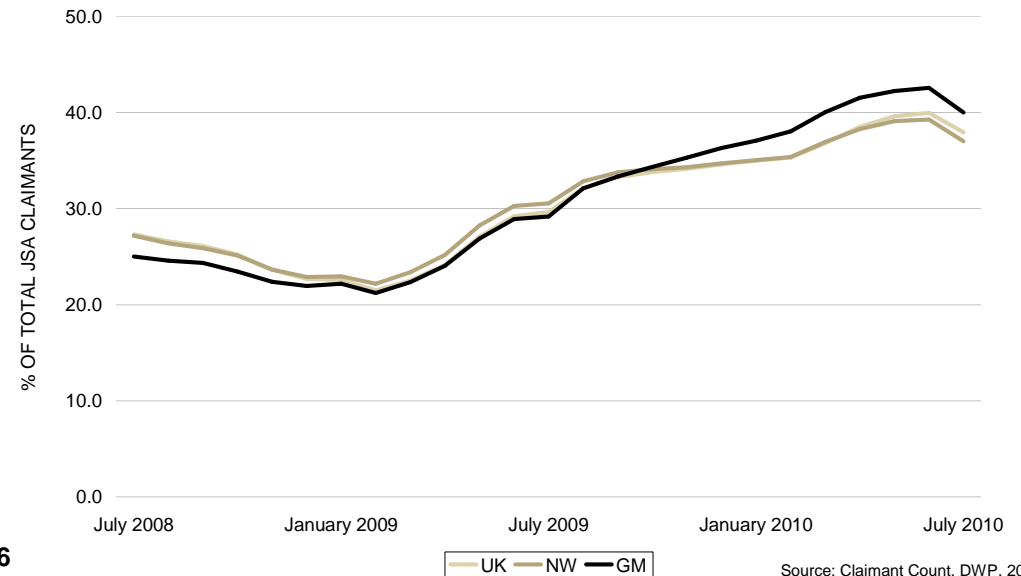
As figure 8 shows, the on-flow of new claimants during the early part of the recession reduced the proportion of long-term claimants, but now the proportion in Greater Manchester is higher than the North West or the UK.

Figure 7: Long-term JSA claimants as a proportion of total JSA claimants by district, July 2010



Source: Claimant Count, DWP, 2010

Figure 8: Historical Long-term JSA claimants as a proportion of total JSA claimants, July 2008 – July 2010



Source: Claimant Count, DWP, 2010

JOBSEEKER'S ALLOWANCE CLAIMANTS: YOUTH CLAIMANTS

Figure 9: Youth JSA claimants (16 to 24 years old) by proportion of total JSA claimants, July 2009 – July 2010

District	Ward	Youth JSA Claimants			
		Number	Monthly Change (%)	Annual Change (%)	% of total JSA
Tameside	Droylsden West	110	10.0%	10.0%	40.0%
Manchester	Withington	145	16.0%	20.8%	39.7%
Oldham	Crompton	70	0.0%	-6.7%	39.1%
Wigan	Winstanley	100	5.3%	-16.7%	39.1%
Tameside	Stalybridge South	110	4.8%	-8.3%	38.2%
Manchester	Woodhouse Park	195	-7.1%	-2.5%	37.6%
Manchester	Benchill	245	-5.8%	11.4%	37.6%
Salford	Little Hulton	190	5.6%	11.8%	37.5%
Rochdale	Heywood South	135	-6.9%	-12.9%	37.0%
Bury	Church	55	0.0%	-15.4%	36.9%
Bolton		2,270	3.4%	-12.4%	30.9%
Bury		1,285	-2.7%	-20.4%	31.6%
Manchester		5,300	0.1%	-4.6%	30.3%
Oldham		2,075	0.5%	-13.2%	32.0%
Rochdale		2,155	-2.9%	-14.3%	32.5%
Salford		2,195	0.9%	-8.5%	30.0%
Stockport		1,690	-0.3%	-15.1%	28.9%
Tameside		2,070	0.2%	-7.8%	33.3%
Trafford		1,300	7.0%	-2.6%	29.5%
Wigan		2,760	2.0%	-18.3%	32.5%
Greater Manchester		23,105	0.6%	-11.2%	31.1%
North West		53,495	1.7%	-16.5%	30.2%
United Kingdom		411,965	2.6%	-13.6%	28.6%

Source: Claimant Count, DWP, 2010

The youth (aged 16-24) JSA claimant count stood at 23,105 in GM in July 2010 (31.1% of the total JSA claimant level). This was higher than the North West (30.2%) and UK (28.6%) proportions. Tameside experienced the highest proportion of youth claimants (33.3%), with Droylsden West in Tameside having the highest ward proportion – 40.0%.

As figure 11 shows, the proportion of youth claimants experiences a continuing pattern that follows the academic year. As the summer months begin, and the academic year comes to an end, we are beginning to see more youth claimants, which are expected to dip again around September / October.

Figure 10: JSA Youth claimants as a proportion of total JSA claimants by district, July 2010

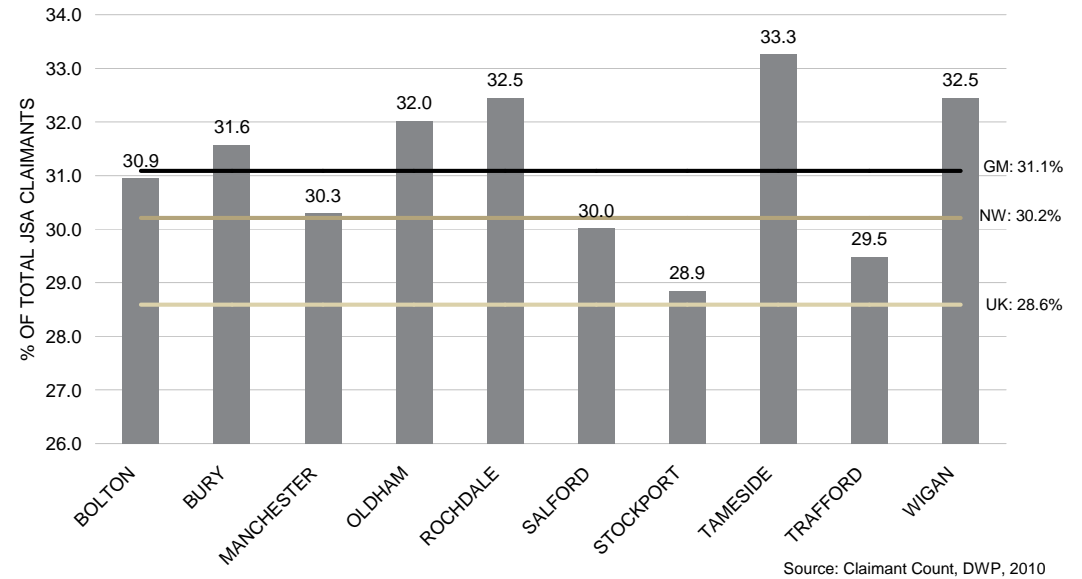
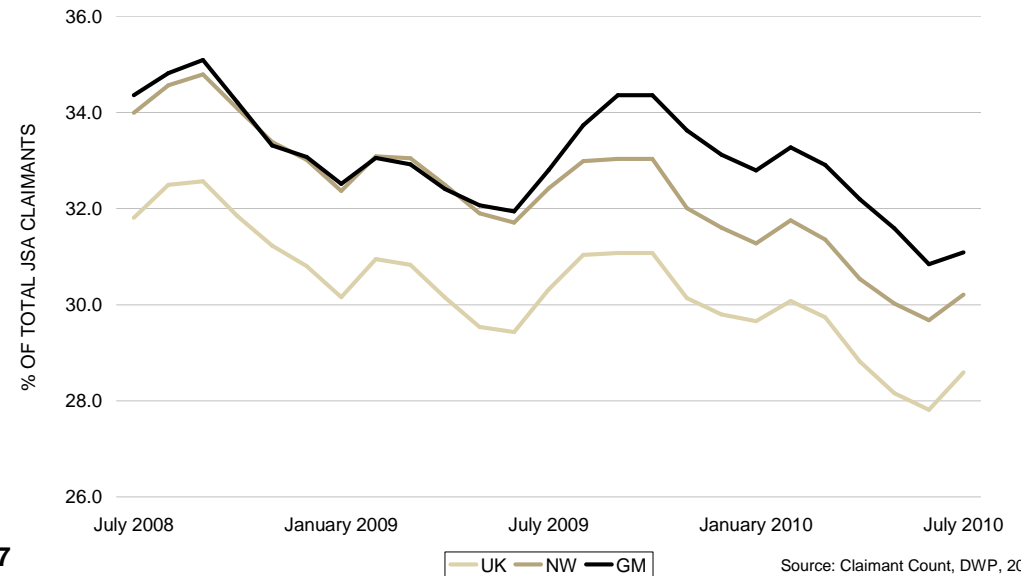


Figure 11: Historical JSA Youth claimants as a proportion of total JSA claimants, July 2008 – July 2010



JOBSEEKER'S ALLOWANCE FLOWS: TOTAL CLAIMANT FLOWS

Figure 12: JSA claimant flows by age and duration, July 2010

Age	Off-Flow Duration of Claim					Total On-Flows	Net Flows
	1 to 26 weeks	26 to 52 weeks	52 to 104 weeks	104 weeks and above	Total		
Under 17	10	0	0	0	10	15	5
17	80	5	0	0	90	100	10
18	920	160	5	0	1,095	1,170	75
19	855	285	60	0	1,195	1,135	-60
20-24	3,195	975	275	5	4,465	4,785	320
25-29	1,650	400	205	30	2,290	2,305	15
30-34	1,050	290	165	35	1,535	1,555	20
35-39	865	275	170	20	1,335	1,285	-50
40-44	835	225	155	40	1,245	1,205	-40
45-49	730	230	155	40	1,155	1,065	-90
50-54	520	175	130	25	855	730	-125
55-59	435	115	75	25	650	590	-60
Over 60	145	40	25	5	205	165	-40
Total	11,285	3,175	1,415	245	16,120	16,105	-15

Source: Claimant Count Flows, DWP, 2010. Note: Columns may not sum due to rounding

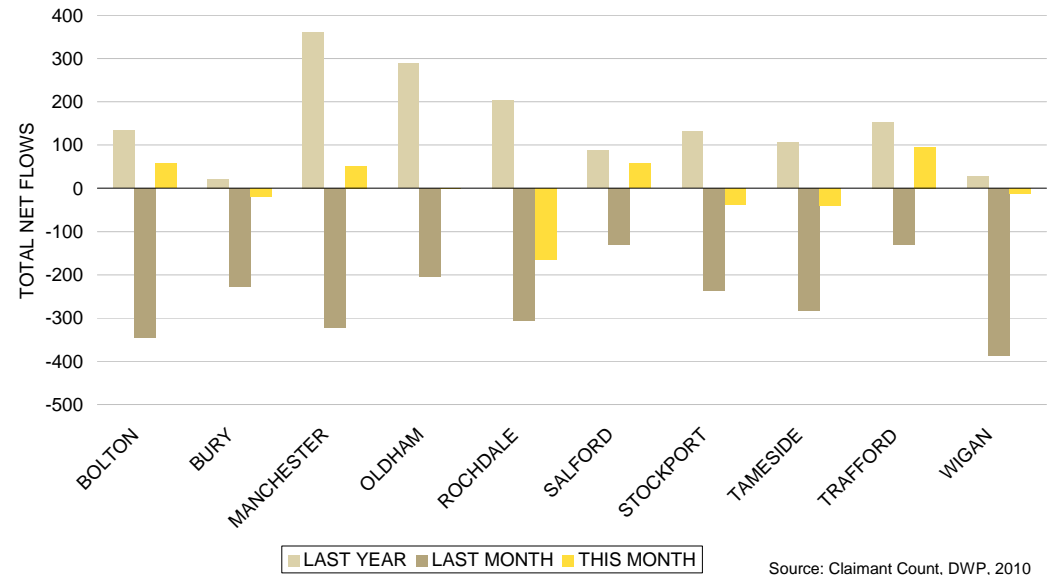
The total net flow of JSA claimants in GM was an off-flow of just 15, compared to last month's net off-flow of 2,570. The greatest number of net off-flows occurred in the 50-54 year old age bracket (125 net off-flows), whilst 20-24 year olds experienced the greatest number of net on-flows (320).

The majority of off-flows from JSA in GM (70.0%) occurred within the first 6 months of claiming. This proportion has seen a slight increase from the June level of 69.7%.

Figures 13 and 14 highlight how the on-flows and off-flows have altered over the course of the last two years. Six districts have experienced net off-flows this month, in comparison to all districts experiencing net off-flows in June 2010. However, the positions is still better for all districts than last year.

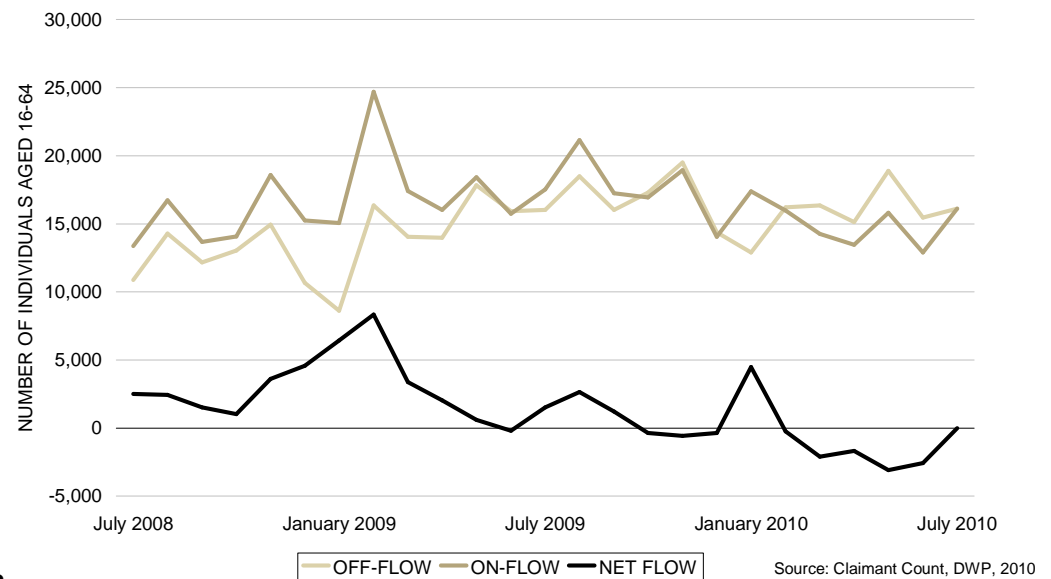
On-flows have mainly come through elementary trades (3,190 on-flows) and sales occupations (2,835), and leave mainly into similar occupations.

Figure 13: Net flows of JSA claimants by district, July 2009 – July 2010



Source: Claimant Count, DWP, 2010

Figure 14: On-flows, off-flows and net flows of JSA claimants in Greater Manchester, July 2008 – July 2010



Source: Claimant Count, DWP, 2010

Figure 15: On-flows of JSA claimants by usual occupation, July 2009 – July 2010

Occupation	On-Flow			
	Number	Monthly Change (%)	Annual Change (%)	Percentage of total
	Jul 10	Jun10 – Jul10	Jul09 – Jul10	Jul 10
00 : Occupation unknown	385	26.2%	165.5%	2.4%
11 : Corporate Managers	475	15.9%	-28.0%	2.9%
12 : Managers and Proprietors in Agriculture	95	-9.5%	-29.6%	0.6%
21 : Science and Technology Prof.	220	41.9%	-34.3%	1.4%
22 : Health Prof.	10	100.0%	-50.0%	0.1%
23 : Teaching and Research Prof.	255	131.8%	-21.5%	1.6%
24 : Business and Public Service Prof.	185	37.0%	-26.0%	1.1%
31 : Science and Technology Assoc. Prof.	235	38.2%	-13.0%	1.5%
32 : Health and Social Welfare Assoc. Prof.	140	47.4%	3.7%	0.9%
33 : Protective Service Occ.	15	0.0%	-50.0%	0.1%
34 : Culture, Media and Sports Occ.	380	52.0%	-17.4%	2.4%
35 : Business and Public Service Assoc Prof.	305	48.8%	-29.1%	1.9%
41 : Administrative Occ.	1,485	40.1%	-14.7%	9.2%
42 : Secretarial and Related Occ.	205	20.6%	-21.2%	1.3%
51 : Skilled Agricultural Trades	145	45.0%	31.8%	0.9%
52 : Skilled Metal and Electronic Trades	540	12.5%	-20.0%	3.4%
53 : Skilled Construction and Building Trades	750	12.8%	-25.0%	4.7%
54 : Textiles, Printing, Other Skilled Trades	205	20.6%	-19.6%	1.3%
61 : Caring Personal Service Occ.	740	39.6%	6.5%	4.6%
62 : Leisure and Other Personal Service Occ.	245	58.1%	-12.5%	1.5%
71 : Sales Occ.	2,835	30.9%	13.4%	17.6%
72 : Customer Service Occ.	475	25.0%	-18.1%	2.9%
81 : Process, Plant and Machine Operatives	495	20.7%	-15.4%	3.1%
82 : Transport and Mobile Machine Drivers and Operatives	680	2.3%	-19.5%	4.2%
91 : Elementary Trades, Plant and Storage Related Occ.	3,190	13.7%	-5.1%	19.8%
92 : Elementary Administration and Service Occ.	1,405	19.1%	-3.1%	8.7%
TOTAL	16,105	24.9%	-8.1%	100.0%

Source: Claimant Count Flows, DWP, 2010

JOBSEEKER'S ALLOWANCE FLOWS: OCCUPATION

Figure 16: Off-flows of JSA claimants into employment by sought occupation, July 2009 – July 2010

Occupation	Off-Flow into Employment			
	Number	Monthly Change (%)	Annual Change (%)	Percentage of total
	Jul 10	Jun10 – Jul10	Jul09 – Jul10	Jul 10
00 : Occupation unknown	90	20.0%	-	1.4%
11 : Corporate Managers	265	-10.2%	-10.2%	4.2%
12 : Managers and Proprietors in Agriculture	40	0.0%	-20.0%	0.6%
21 : Science and Technology Prof.	135	35.0%	22.7%	2.2%
22 : Health Prof.	5	0.0%	-	0.1%
23 : Teaching and Research Prof.	55	37.5%	0.0%	0.9%
24 : Business and Public Service Prof.	70	0.0%	-6.7%	1.1%
31 : Science and Technology Assoc. Prof.	95	-5.0%	5.6%	1.5%
32 : Health and Social Welfare Assoc. Prof.	60	20.0%	20.0%	1.0%
33 : Protective Service Occ.	5	-50.0%	-66.7%	0.1%
34 : Culture, Media and Sports Occ.	155	10.7%	29.2%	2.5%
35 : Business and Public Service Assoc Prof.	145	-3.3%	-3.3%	2.3%
41 : Administrative Occ.	565	-0.9%	-2.6%	9.0%
42 : Secretarial and Related Occ.	90	5.9%	0.0%	1.4%
51 : Skilled Agricultural Trades	40	-33.3%	60.0%	0.6%
52 : Skilled Metal and Electronic Trades	260	2.0%	13.0%	4.2%
53 : Skilled Construction and Building Trades	480	7.9%	17.1%	7.7%
54 : Textiles, Printing, Other Skilled Trades	100	-13.0%	0.0%	1.6%
61 : Caring Personal Service Occ.	270	3.8%	45.9%	4.3%
62 : Leisure and Other Personal Service Occ.	90	-5.3%	63.6%	1.4%
71 : Sales Occ.	795	10.4%	52.9%	12.7%
72 : Customer Service Occ.	200	2.6%	5.3%	3.2%
81 : Process, Plant and Machine Operatives	260	0.0%	6.1%	4.2%
82 : Transport and Mobile Machine Drivers and Operatives	425	-2.3%	2.4%	6.8%
91 : Elementary Trades, Plant and Storage Related Occ.	1,130	-7.0%	15.3%	18.1%
92 : Elementary Administration and Service Occ.	435	13.0%	35.9%	7.0%
TOTAL	6,255	1.4%	16.9%	100.0%

Source: Claimant Count Flows, DWP, 2010

JOBSEEKER'S ALLOWANCE FLOWS: REASONS FOR OFF-FLOWS

Figure 17: Reason for off-flows from the JSA claimant count, July 2009 – July 2010

Reason for off-flow	JSA Claimant Off-Flows			
	Number	Monthly Change (%)	Annual Change (%)	Percent of total
	Jul 10	Jun10 – Jul10	Jul09 – Jul10	Jul 10
Found work or increased work to more than 16 hours a week	6,255	1.4%	16.9%	38.8%
Claimed benefit other than JSA	465	1.1%	-5.1%	2.9%
Claimed Income Support	185	2.8%	8.8%	1.1%
Claimed Incapacity Benefit	90	-14.3%	-48.6%	0.6%
Claimed another benefit	170	0.0%	21.4%	1.1%
Government supported training	975	2.1%	-14.8%	6.0%
Education or approved training	400	142.4%	19.4%	2.5%
Gone abroad	970	29.3%	-20.5%	6.0%
Ceased claiming	225	18.4%	4.7%	1.4%
Failed to sign	4,450	-2.2%	-12.4%	27.6%
Other reasons	540	31.7%	42.1%	3.3%
Retirement age reached	20	300.0%	0.0%	0.1%
Not known	1,845	1.7%	2.8%	11.4%
All reasons	16,120	4.2%	0.7%	100.0%

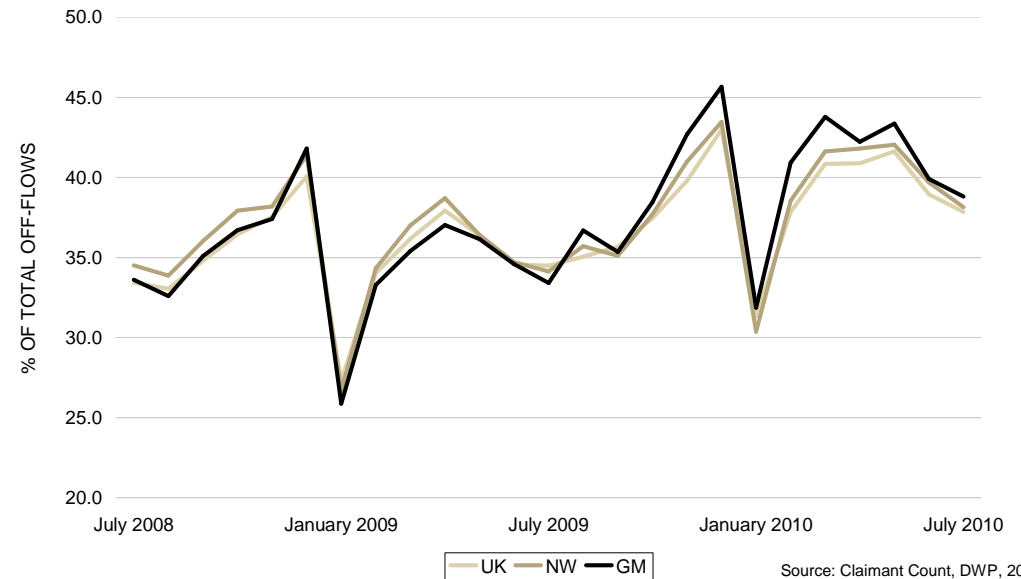
Source: Claimant Count Flows, DWP, 2010

The main reason for an off-flow from the JSA register was because the claimant found work or increased work to more than 16 hours a week (6,255 off-flows). This accounted for 38.8% of the total number of claimants moving off the register. Annually, there was an increase of 16.9% in the number of claimants moving into employment.

Across GM, 465 claimants moved from JSA to another benefit in July 2010. The greatest proportion of these claimant off-flows were to income support (185). 90 claimants flowed onto IB/ESA, an annual decrease of 48.6%. As can be seen in figure 19, the proportion of off-flows moving to another benefit has fallen by nearly two-thirds in two years.

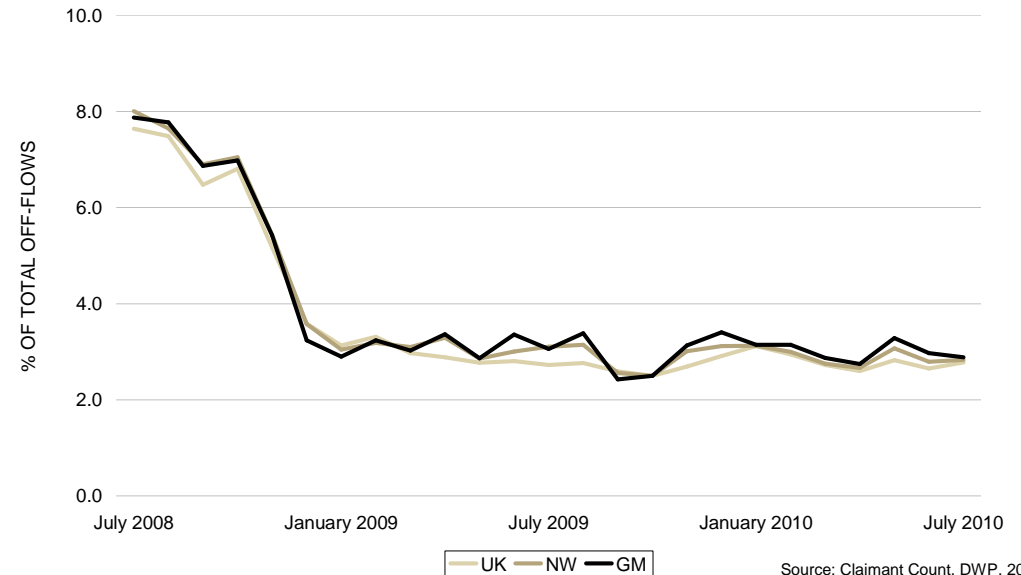
6.0% of off-flows (975 off-flows) moved into government supported training in July, and a further 400 (2.5%) moved into education or approved training – a significant rise of 142.4% in the month, and a rise of 19.4% on the year.

Figure 18: Proportion of off-flows moving into employment, July 2008 – July 2010



Source: Claimant Count, DWP, 2010

Figure 19: Proportion of off-flows moving onto another benefit, July 2008 – July 2010



Source: Claimant Count, DWP, 2010

JOBCENTRE PLUS NOTIFIED VACANCIES: TOTAL VACANCIES

Figure 20: JCP notified vacancies by number, July 2009 – July 2010

District	Ward	JCP Notified Vacancies			
		Number	Monthly Change (%)	Annual Change (%)	Vacancy Ratio to JSA Claimants
		Jul 10	Jun10 – Jul10	Jul09 – Jul10	Jul 10
Manchester	Central	1,977	1.5%	23.9%	2.90
Trafford	Altrincham	405	55.2%	-13.8%	2.47
Trafford	Davyhulme East	368	-22.4%	60.0%	2.77
Salford	Weaste and Seedley	340	-24.1%	111.2%	1.08
Wigan	Swinley	333	29.6%	-16.8%	1.10
Trafford	Park	323	-27.9%	113.9%	1.52
Salford	Ordsall	316	2.6%	-77.2%	0.88
Bury	Redvales	314	-44.5%	72.5%	0.86
Bolton	Blackrod	305	-13.1%	122.6%	1.29
Oldham	St. Pauls	300	26.6%	104.1%	0.73
Bolton		1,205	-22.1%	23.1%	0.16
Bury		786	-28.4%	38.9%	0.19
Manchester		3,991	-6.6%	11.3%	0.23
Oldham		1,319	-7.2%	74.2%	0.20
Rochdale		1,169	-33.4%	32.8%	0.18
Salford		1,577	-22.2%	-31.0%	0.22
Stockport		1,430	-41.3%	4.5%	0.24
Tameside		700	-21.1%	6.5%	0.11
Trafford		2,111	-1.7%	14.7%	0.48
Wigan		1,462	4.4%	16.8%	0.17
Greater Manchester		15,750	-17.1%	11.1%	0.21
North West		41,158	-15.2%	13.4%	0.23
Great Britain		322,902	-1.8%	21.4%	0.23

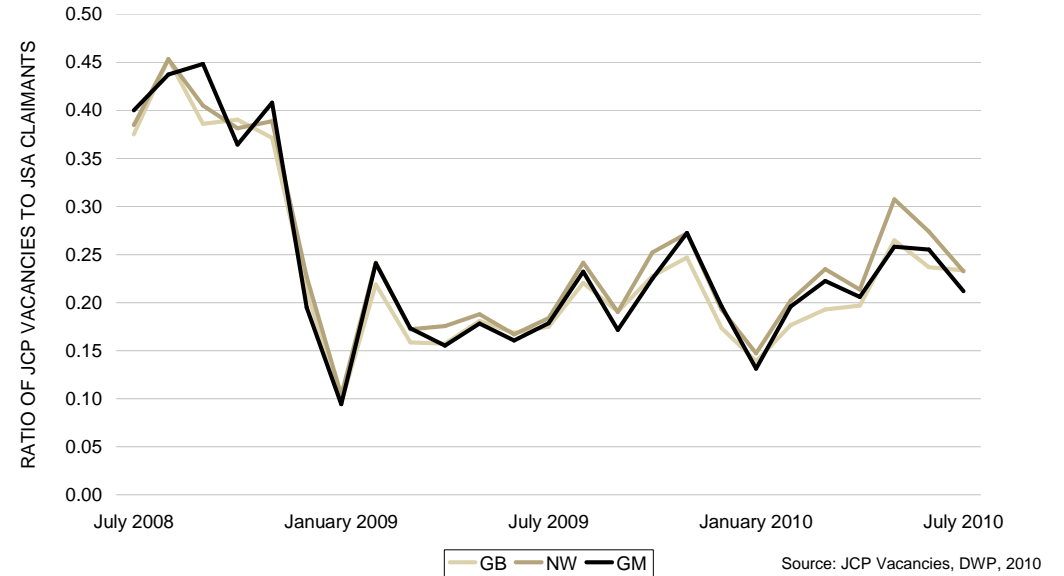
Source: JCP Vacancies, DWP, 2010

The total number of vacancies in GM stood at 15,750 in July 2010 – a 17.1% monthly decrease in notified vacancies. This was a larger decrease than the North West (15.2%) and Great Britain (1.8%).

The City of Manchester experienced the highest number of vacancies (3,991). Only Wigan (4.4%) experienced a monthly increase in vacancies, whilst Stockport (-41.3%) experienced the greatest decrease.

Annually, Oldham has seen the greatest increase in vacancies (74.2%), though this was from a base of just 757 vacancies in July 2009.

Figure 21: Ratio of JCP notified vacancies to JSA claimants by area, July 2008 – July 2010



Within GM, the ratio of vacancies to JSA claimants was highest in Trafford (0.48), only a marginal decrease from 0.50 last month. Comparatively, Tameside, with a low number of notified vacancies and a relatively higher number of claimants, continues to experience the lowest ratio of 0.11 – the equivalent of 11 job vacancies for every 100 claimants.

As can be seen from figures 22 and 23, sales occupations experienced the greatest numbers of vacancies in the last month (2,605 vacancies). This was followed by vacancies for business and public service associate professionals (2,031 vacancies). However, these occupations were not where the majority of new claimants came from – i.e. elementary trades (see claimant on-flows, above). This suggests a continuing mismatch between the jobs claimants are coming from, and the jobs available in the economy. However, it also suggests significant churn in elementary trades jobs.

The majority of vacancies were within the real estate, renting and business activities sector (9,924 vacancies, or 63.0% of total vacancies). This is a decrease of 14.0% on the 11,536 vacancies in June. Wholesale and retail trade vacancies also saw a significant monthly decrease of 1,045 vacancies (51.1%).

JOBCENTRE PLUS NOTIFIED VACANCIES: OCCUPATION AND INDUSTRY

Figure 22: Vacancies by occupation, July 2009 – July 2010

Occupation	JCP Notified Vacancies			
	Number	Monthly Change (%)	Annual Change (%)	Percentage of total
	Jul 10	Jun10 – Jul10	Jul09 – Jul10	Jul 10
11 : Corporate Managers	385	-33.7%	-10.0%	2.4%
12 : Managers and Proprietors in Agriculture and Services	133	10.8%	31.7%	0.8%
21 : Science and Technology Professionals	151	10.2%	46.6%	1.0%
22 : Health Professionals	10	42.9%	-64.3%	0.1%
23 : Teaching and Research Professionals	207	-21.3%	-23.6%	1.3%
24 : Business and Public Service Professionals	118	18.0%	-3.3%	0.7%
31 : Science and Technology Associate Professionals	83	-22.4%	-32.5%	0.5%
32 : Health and Social Welfare Associate Professionals	260	-15.6%	-22.8%	1.7%
33 : Protective Service Occupations	0	-100.0%	-100.0%	0.0%
34 : Culture, Media and Sports Occupations	294	102.8%	90.9%	1.9%
35 : Business and Public Service Associate Professionals	2,031	-12.8%	-4.9%	12.9%
41 : Administrative Occupations	967	-9.5%	-20.8%	6.1%
42 : Secretarial and Related Occupations	350	59.1%	35.7%	2.2%
51 : Skilled Agricultural Trades	38	-9.5%	-47.2%	0.2%
52 : Skilled Metal and Electronic Trades	375	-4.6%	57.6%	2.4%
53 : Skilled Construction and Building Trades	430	3.4%	68.0%	2.7%
54 : Textiles, Printing and Other Skilled Trades	237	-30.3%	5.3%	1.5%
61 : Caring Personal Service Occupations	910	-17.3%	-11.2%	5.8%
62 : Leisure and Other Personal Service Occupations	149	-30.0%	-17.2%	0.9%
71 : Sales Occupations	2,605	-24.6%	3.4%	16.5%
72 : Customer Service Occupations	978	-34.8%	41.5%	6.2%
81 : Process, Plant and Machine Operatives	544	-18.3%	40.9%	3.5%
82 : Transport and Mobile Machine Drivers and Operatives	1,722	-18.5%	123.3%	10.9%
91 : Elementary Trades, Plant and Storage Related Occupations	944	-28.0%	16.8%	6.0%
92 : Elementary Administration and Service Occupations	1,829	-10.8%	7.1%	11.6%

Source: JCP Vacancies data, 2010

Figure 23: Vacancies in Manchester by industry, July 2009 – July 2010

Industry	JCP Notified Vacancies			
	Number	Monthly Change (%)	Annual Change (%)	Percentage of total
	Jul 10	Jun10 – Jul10	Jul09 – Jul10	Jul 10
A : Agriculture, hunting and forestry	39	-27.8%	178.6%	0.2%
B : Fishing	0	-	-	0.0%
C : Mining and quarrying	1	-90.0%	-80.0%	0.0%
D : Manufacturing	445	8.5%	7.2%	2.8%
E : Electricity, gas and water supply	263	82.6%	232.9%	1.7%
F : Construction	545	-5.9%	55.3%	3.5%
G : Wholesale and retail trade; repair of motor vehicles, motorcycles and personal and household goods	1,001	-51.1%	-6.4%	6.4%
H : Hotels and restaurants	604	-6.1%	6.5%	3.8%
I : Transport, storage and communication	320	-1.5%	-36.3%	2.0%
J : Financial intermediation	295	-52.6%	26.1%	1.9%
K : Real estate, renting and business activities	9,924	-14.0%	21.4%	63.0%
L : Public administration and defence; compulsory social security	232	-24.7%	-73.6%	1.5%
M : Education	269	-20.6%	-2.9%	1.7%
N : Health and social work	878	-16.3%	-19.3%	5.6%
O : Other community, social and personal service activities	877	-1.6%	78.6%	5.6%
P : Private households with employed persons	25	56.3%	19.0%	0.2%
Q : Extra-territorial organisation and bodies	32	100.0%	1500.0%	0.2%

Source: JCP Vacancies data, 2010

Significant shifts in the number of vacancies reported to JCP were experienced over time. Skilled metal and electronic trades vacancies, for example, experienced a 4.6% monthly decrease but a 57.6% increase over the year.

Most occupations have seen decreases in vacancies over the past month. However, Culture, Media and Sports Occupations have experienced an increase of 149 vacancies this month – a growth of 102.8% over the month and a growth of 90.9% over the year.

TECHNICAL NOTE

Please use caution when interpreting economic data. The data provided in the above tables is given as an indicator of unemployment trends and is reliant on accurate reporting by the DWP and JCP.

There are three areas in which caution should be especially used:

Interpretation of the figures

The JSA claimant figures are exactly those reported by JCP via DWP. However, this is not the official measure of unemployment, and is indicative only of the true level of unemployed individuals. Whilst throughout this document, reference to the JSA claimants includes 'unemployed', 'unemployment' and the 'unemployment rate', the more accurate measure of unemployment, the ILO unemployment rate, is reported quarterly in the Commission for the New Economy's Worklessness Monitor, as it is provided quarterly. As such, it is not reported here.

The difference between the two measures is important to understand. Whilst the JSA claimant count covers all JSA claimants and NIC claimants, it does not cover those individuals who are actively seeking a job, have no job and are not claiming either of these two benefits. For example, individuals that have sufficient funds to support themselves after losing a job may not wish to, or be eligible to, claim JSA. As such, they are unemployed, but are not counted in the claimant count. They would, however, be counted in the ILO unemployment rate.

Vacancy data also requires some interpretation. The figures provided by JCP are all those notified to JCP. They do not, however, cover the entirety of the vacancies in the market, and it has been estimated that JCP notified vacancies make up roughly 40% of the total number of vacancies within the economy.

Rounding of the figures

DWP round some figures when reporting to protect the anonymity of claimants; and some figures have been rounded by the Commission for the New Economy. As such, the figures in some tables may not sum. This is not due to inaccuracies.

In addition, the age and duration data for JSA claimants excludes non-computerised clerical claims, which account for around 1% of claims. The 1% difference does not make a significant difference to the figures.

Calculations by the Commission for the New Economy

Percentage changes are calculated by the Commission for the New Economy. These calculations need to be treated with caution. The base values used affects percentage increases. For example, for a small base, a small change in the claimant volume can lead to a large percentage change. This is particularly relevant at the ward level, where the addition or subtraction of just a small number of individuals can lead to large percentage increases / decreases.

Calculations are also provided for the vacancy to JSA claimant ratio. These figures take the number of claimants and vacancies together, and provide a value for how many vacancies there are in any one area for every JSA claimant in that area. These calculations are not provided by ONS or DWP, but instead are an indicative calculation provided to show the jobs to labour ratio for the unemployed in any one area.

GLOSSARY

DWP

Department for Work and Pensions.

JCP

Jobcentre Plus. JCP is a government agency supporting people of working age from welfare into work and helping employers to fill their vacancies.

Jobseeker's Allowance

Jobseeker's allowance (JSA) is the most common unemployment benefit. It is mainly paid when eligible individuals don't have a job and are looking for work, however in certain circumstances it can be claimed by individuals that are in work but working less than 16 hours a week. There are 2 types of JSA: (1) 'Contribution-based Jobseeker's Allowance' which is paid at a standard rate if individuals have paid or been credited with enough class 1 National Insurance contributions; and (2) 'Income-based Jobseeker's Allowance' which is based on individuals' income and savings and is paid at a rate based on individual circumstances. A long-term claimant is defined as someone who has claimed JSA for more than 6 months.

Wards

Wards refer to the 2003 Census Area Statistics (CAS) wards, rather than the 2005 CAS wards. This is because the 2003 wards have defined populations working age / 16-64 populations. There is also a level of consistency in using these wards for continual comparison.

Working Age Population

The total number of individuals within an area that are female aged 16-59 and male aged 16-64. These are no longer used for claimant rates. Instead, the total population aged 16-64 is used as the denominator.

SOURCES

Annual / Monthly Change

Source: Calculations by the Commission for the New Economy;

JCP Vacancies

Source: Vacancies notified to JCP, DWP, 2010;

JSA Claimants

Source: Claimant Count – Age and Duration, DWP, 2010 – this dataset excludes non-computerised clerical claims, which constitute approximately 1% of claimants;

JSA Claimant Rate

Source: Claimant Count – Age and Duration, DWP, 2010;

Long-Term JSA Claimants

Source: Claimant Count – Age and Duration, DWP, 2010;

Youth JSA Claimants

Source: Claimant Count – Age and Duration, DWP, 2010;