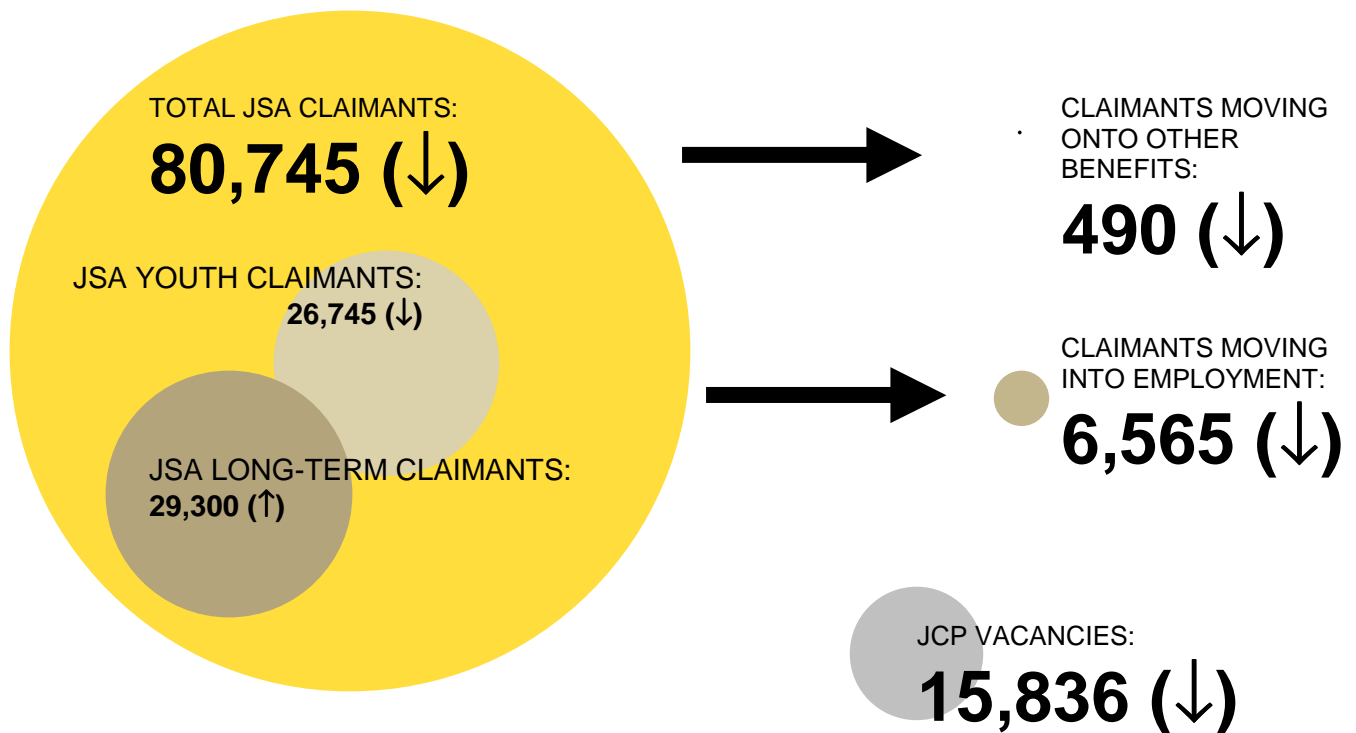


# unemployment **MONITOR**

GREATER MANCHESTER, JANUARY 2010  
USING DECEMBER 2009 DATA



#### IN THIS EDITION:

- **TOTAL JSA CLAIMANTS FALL FOR THIRD MONTH IN A ROW**
- **LONG-TERM JOBSEEKERS CONTINUE TO INCREASE DESPITE FALLS IN OVERALL CLAIMANT COUNT**
- **YOUTH CLAIMANTS FALL FASTER THAN THE NATIONAL AND REGIONAL RATE**
- **NEARLY HALF OF ALL CLAIMANT OFF FLOWS MOVING INTO WORK, BUT STILL SOME MOVING ON TO OTHER BENEFITS TOO**
- **JOB OPPORTUNITIES FALL IN THE CITY REGION**

**CONTACT:**

t: 0161 237 4024

e: [christopher.pope@neweconomymanchester.com](mailto:christopher.pope@neweconomymanchester.com)

w: <http://www.neweconomymanchester.com/>

twitter: mancmonitor

## CONTENTS

<b>Monitor Focus .....</b>	<b>3</b>
<b>Jobseeker’s Allowance Claimants .....</b>	<b>4</b>
Rates .....	4
Gender .....	5
Long-term .....	7
Youth .....	8
<b>Jobseeker’s Allowance Flows .....</b>	<b>9</b>
Age and Duration .....	9
Flows by Occupation .....	10
Off-flows by Reason .....	11
<b>Jobcentre Plus Vacancies .....</b>	<b>12</b>
Total Vacancies .....	12
Occupation and Industry .....	13
Technical Note .....	14
Definitions .....	15
Sources .....	16

## Monitor FOCUS

### Claimant count falls, vacancies rise

For the third month in a row, Greater Manchester has experienced a decrease in jobseeker's allowance claimants, complementing a decrease both regionally and nationally. The city region experienced a decrease of 0.6% to 80,745 claimants, whilst the North West experienced a fall of 0.5% and the UK a fall of just 0.2%.

However, despite the positive move for JSA claimants, the number of reported vacancies fell in December, with fewer vacancies for the Christmas period and the new year. As both claimants and vacancies have fallen, the ratio of jobs to claimants has fallen to 20 jobs for every 100 claimants in Greater Manchester. Last month, this ratio stood at 27 jobs per 100 claimants. Comparatively, though, Greater Manchester is performing better than the North West and national averages – with 19 and 17 jobs per 100 claimants respectively.

In the three months to November 2009, New Economy estimates that total unemployment – which includes both unemployment benefit claimants and those not claiming benefit – continued to fall to around 116,700 in Greater Manchester, with just under one-third not claiming JSA. This was a quarterly decrease of around 8,000, or 6.4%, in comparison to a national quarterly decrease of 6,700, or 0.3%.

**Figure 1: Annual and Monthly Change in JSA and Vacancy Levels, December 2008 – December 2009 and November 2009 – December 2009**

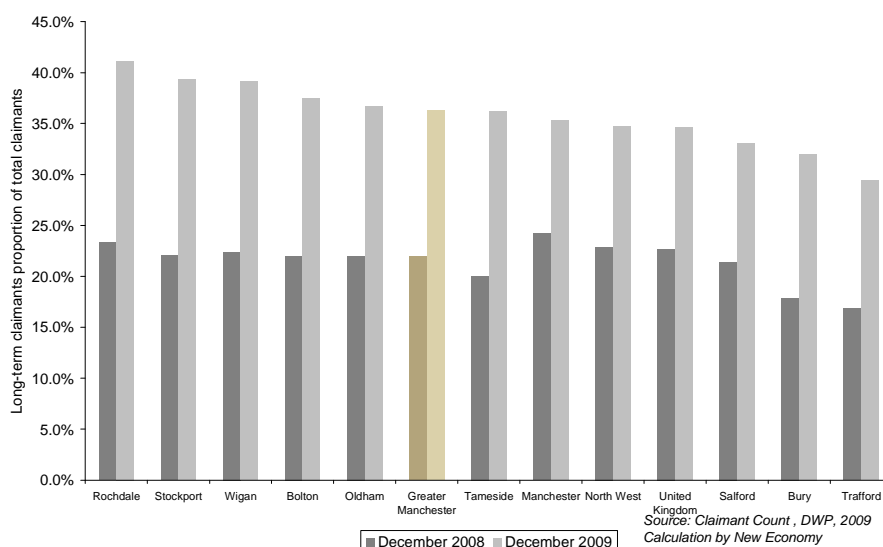
Area	Total JSA Claimants			Long-term (6 months +) JSA Claimants			Youth (16-24) JSA Claimants			JCP Reported Vacancies		
	Number	Annual Change	Monthly Change	Number	Annual Change	Monthly Change	Number	Annual Change	Monthly Change	Number	Annual Change	Monthly Change
Greater Manchester	80,745	22,439 (38.5%)	-504 (-0.6%)	29,300	16,505 (129.0%)	605 (2.1%)	26,745	7,460 (38.7%)	-575 (-2.1%)	15,836	4,481 (39.5%)	-6,298 (-28.5%)

As the city region moved into December, the number of job opportunities fell by nearly 6,300 (28.5%) to 15,836 vacancies. Whilst this reflects the reduced demand for temporary workers in the lead up to Christmas, there was a welcome note in that vacancies were up nearly 4,500 on December 2008. The higher number of vacancies reflects the greater certainty and confidence around the business environment moving towards the new year.

### Changes in long-term unemployment

On a more discouraging note, the number of long-term claimants continues to grow. The number of claimants who have been claiming for more than 6 months increased by 605 this month (2.1%) despite a general fall in total claimant numbers, and the number flowing off the register fell by 990 (23.4%).

If this trend continues, there could be more than 30,000 long-term claimants in the city region by February 2010 – nearly 40% of all claimants.



The remainder of this document provides detailed analysis of jobseeker's allowance and vacancy data across Greater Manchester.

# JOBSEEKER'S ALLOWANCE CLAIMANTS: TOTAL CLAIMANTS

Figure 1: JSA Claimant Count by rate, December 2008 – December 2009

District	Ward	JSA Claimants			
		Number	Monthly Change (%)	Annual Change (%)	Rate
		Dec 09	Nov09 - Dec09	Dec08 - Dec09	Dec 09
Rochdale	Central and Falinge	851	-1.8%	29.1%	13.4%
Stockport	Brinnington	740	-0.5%	37.0%	12.1%
Salford	Langworthy	390	-1.3%	25.8%	10.1%
Bolton	Central	667	2.6%	39.0%	9.8%
Oldham	Coldhurst	701	-1.0%	41.6%	9.5%
Wigan	Norley	535	2.7%	21.9%	9.3%
Manchester	Benchill	661	0.8%	34.1%	9.1%
Salford	Broughton	462	-0.4%	32.0%	9.1%
Oldham	St. Marys	610	1.3%	38.6%	8.8%
Manchester	Moss Side	874	-1.5%	38.3%	8.7%
<b>Bolton</b>		<b>8,385</b>	<b>-0.2%</b>	<b>40.1%</b>	<b>5.3%</b>
<b>Bury</b>		<b>4,715</b>	<b>-0.1%</b>	<b>44.2%</b>	<b>4.2%</b>
<b>Manchester</b>		<b>18,022</b>	<b>-0.8%</b>	<b>31.9%</b>	<b>5.6%</b>
<b>Oldham</b>		<b>6,886</b>	<b>-0.1%</b>	<b>36.4%</b>	<b>5.2%</b>
<b>Rochdale</b>		<b>7,443</b>	<b>-0.1%</b>	<b>41.8%</b>	<b>5.9%</b>
<b>Salford</b>		<b>7,857</b>	<b>0.1%</b>	<b>46.3%</b>	<b>5.6%</b>
<b>Stockport</b>		<b>6,282</b>	<b>-3.1%</b>	<b>43.5%</b>	<b>3.7%</b>
<b>Tameside</b>		<b>6,851</b>	<b>-0.2%</b>	<b>41.5%</b>	<b>5.1%</b>
<b>Trafford</b>		<b>4,608</b>	<b>-2.2%</b>	<b>37.3%</b>	<b>3.5%</b>
<b>Wigan</b>		<b>9,696</b>	<b>-0.1%</b>	<b>35.7%</b>	<b>5.1%</b>
<b>Greater Manchester</b>		<b>80,745</b>	<b>-0.6%</b>	<b>38.5%</b>	<b>5.0%</b>
<b>North West</b>		<b>194,777</b>	<b>-0.5%</b>	<b>30.3%</b>	<b>4.6%</b>
<b>United Kingdom</b>		<b>1,567,005</b>	<b>-0.2%</b>	<b>35.9%</b>	<b>4.1%</b>

Source: Claimant Count, DWP, 2009

The number of JSA claimants in Greater Manchester fell by 504 (0.6%) to 80,745 in December 2009, a 5.0% claimant rate. Comparatively, the North West (4.6%) and UK (4.1%) experienced lower claimant rates.

The highest JSA claimant rate continued to be in Rochdale (5.9%), with Central and Falinge in Rochdale continuing to have the highest ward claimant rate (13.4%) – despite falling 1.8% this month.

Most local authorities experienced a monthly decrease in JSA claimants, with only Salford experiencing the an increase of 10 claimants (0.1%). The monthly reduction in Greater Manchester (0.6%) exceeded that of the North West (0.5%) and the UK (0.2%).

As can be seen from figure 3, claimant rates are around twice as high as they were 2 years ago. However, the greatest increases in the rate appeared during late 2008 and early 2009, with recent months showing smaller changes.

Figure 2: JSA Claimant Rate by district, December 2009

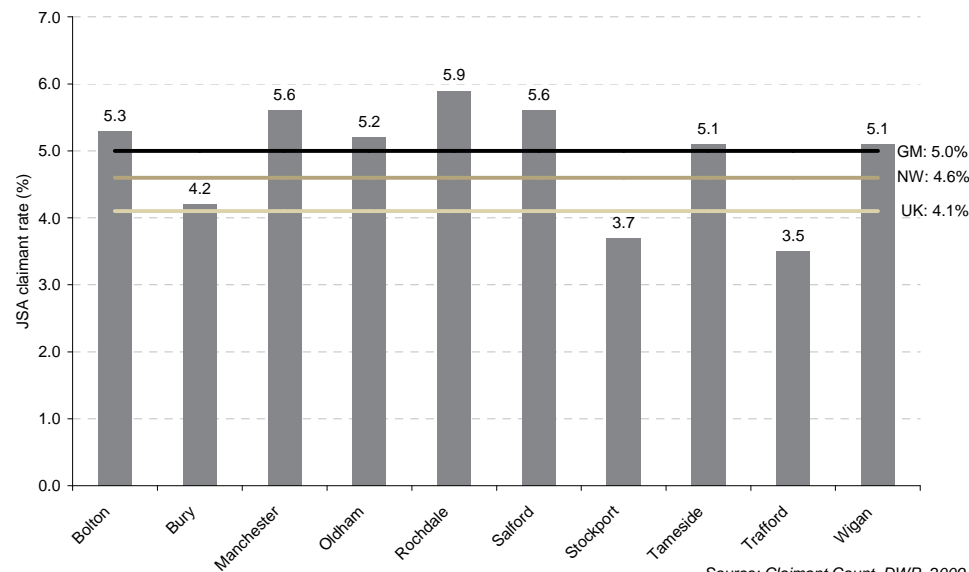
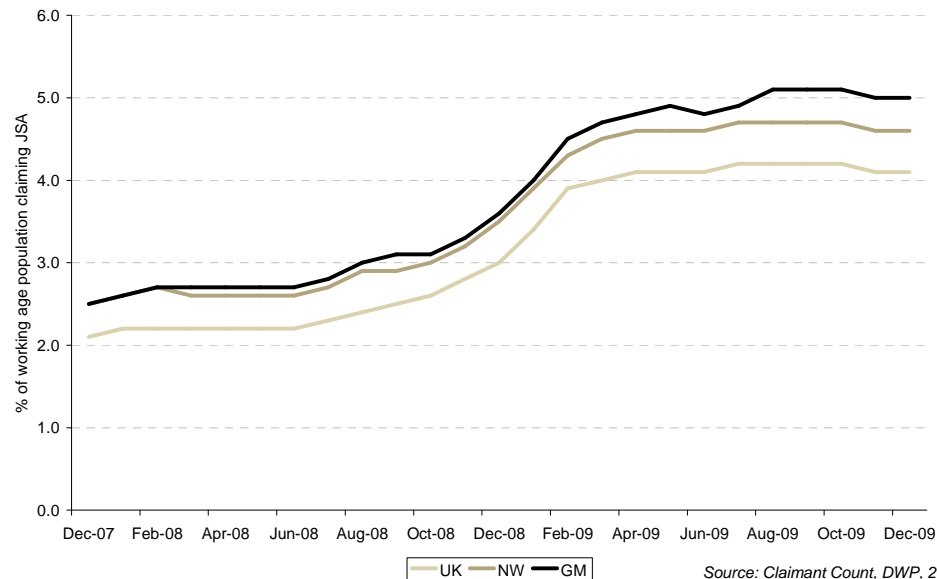


Figure 3: Historical JSA Claimant Rate December 2007 – December 2009



## JOBSEEKER'S ALLOWANCE CLAIMANTS: CLAIMANTS BY GENDER

Figure 4: Male JSA Claimant Count by rate, December 2008 – December 2009

District	Ward	Male JSA Claimants			
		Number	Monthly Change (%)	Annual Change (%)	Rate
		Dec 09	Nov09 - Dec09	Dec08 - Dec09	Dec09
Rochdale	Central and Falinge	663	-1.2%	24.6%	18.7%
Stockport	Brinnington	553	-1.6%	35.5%	17.4%
Manchester	Benchill	495	0.4%	26.6%	14.6%
Salford	Langworthy	300	-2.0%	24.0%	14.4%
Bolton	Central	514	3.8%	38.2%	14.3%
Wigan	Norley	424	4.4%	22.2%	14.3%
Oldham	Coldhurst	545	-0.7%	39.0%	13.9%
Manchester	Beswick and Clayton	461	-1.1%	27.0%	13.1%
Salford	Broughton	361	-1.1%	31.8%	13.0%
Wigan	Newtown	409	2.8%	36.3%	12.7%
<b>Bolton</b>		<b>6,262</b>	<b>-0.1%</b>	<b>36.6%</b>	<b>7.5%</b>
<b>Bury</b>		<b>3,511</b>	<b>1.5%</b>	<b>40.2%</b>	<b>6.0%</b>
<b>Manchester</b>		<b>13,378</b>	<b>-0.4%</b>	<b>26.1%</b>	<b>7.8%</b>
<b>Oldham</b>		<b>5,158</b>	<b>-0.4%</b>	<b>33.9%</b>	<b>7.5%</b>
<b>Rochdale</b>		<b>5,517</b>	<b>0.7%</b>	<b>37.6%</b>	<b>8.3%</b>
<b>Salford</b>		<b>5,948</b>	<b>-0.1%</b>	<b>41.9%</b>	<b>7.9%</b>
<b>Stockport</b>		<b>4,733</b>	<b>-2.3%</b>	<b>42.4%</b>	<b>5.3%</b>
<b>Tameside</b>		<b>5,214</b>	<b>1.0%</b>	<b>41.1%</b>	<b>7.5%</b>
<b>Trafford</b>		<b>3,426</b>	<b>-2.0%</b>	<b>34.1%</b>	<b>5.0%</b>
<b>Wigan</b>		<b>7,381</b>	<b>0.9%</b>	<b>33.5%</b>	<b>7.4%</b>
<b>Greater Manchester</b>		<b>60,528</b>	<b>-0.1%</b>	<b>35.0%</b>	<b>7.1%</b>
<b>North West</b>		<b>146,304</b>	<b>0.2%</b>	<b>27.0%</b>	<b>6.6%</b>
<b>United Kingdom</b>		<b>1,148,772</b>	<b>0.5%</b>	<b>32.8%</b>	<b>5.8%</b>

Source: Claimant Count, DWP, 2009

The male JSA claimant count decreased by 56 (0.1%) to 60,528 in GM in December 2009 (a 7.1% claimant rate). This rate was higher than the North West (6.6%) or the UK (5.8%), yet both the North West and United Kingdom experienced increases in male claimant levels.

Across the local authorities, the highest male claimant rate continued to be experienced in Rochdale (8.3%), partly due to the high rates in Central and Falinge (18.7%). However, Manchester each of Manchester, Salford and Wigan had two wards in the top ten rates, whereas Rochdale only had one.

Bury (1.5%), Rochdale (0.7%), Tameside (1.0%) and Wigan (0.9%) saw monthly increases in the male claimant count, whilst Stockport experienced the greatest decrease of 2.3% (110 claimants).

Figure 5: Female JSA Claimant Count by rate, December 2008 – December 2009

District	Ward	Female JSA Claimants			
		Number	Monthly Change (%)	Annual Change (%)	Rate
		Dec 09	Nov09 - Dec09	Dec08 - Dec09	Dec 09
Rochdale	Central and Falinge	188	-4.1%	48.0%	6.7%
Stockport	Brinnington	187	2.7%	41.7%	6.4%
Oldham	St. Marys	173	-1.7%	46.6%	5.2%
Salford	Langworthy	90	1.1%	32.4%	5.1%
Salford	Ordsall	114	14.0%	115.1%	5.1%
Bolton	Central	153	-1.3%	41.7%	4.8%
Rochdale	Newbold	157	-4.8%	68.8%	4.7%
Bolton	Derby	178	4.7%	34.8%	4.6%
Manchester	Moss Side	221	-3.1%	52.4%	4.6%
Oldham	Coldhurst	156	-1.9%	51.5%	4.6%
<b>Bolton</b>		<b>2,123</b>	<b>-0.7%</b>	<b>51.5%</b>	<b>2.8%</b>
<b>Bury</b>		<b>1,204</b>	<b>-4.4%</b>	<b>57.2%</b>	<b>2.3%</b>
<b>Manchester</b>		<b>4,644</b>	<b>-1.9%</b>	<b>51.8%</b>	<b>3.1%</b>
<b>Oldham</b>		<b>1,728</b>	<b>0.8%</b>	<b>44.6%</b>	<b>2.7%</b>
<b>Rochdale</b>		<b>1,926</b>	<b>-2.4%</b>	<b>55.2%</b>	<b>3.2%</b>
<b>Salford</b>		<b>1,909</b>	<b>0.8%</b>	<b>62.1%</b>	<b>2.9%</b>
<b>Stockport</b>		<b>1,549</b>	<b>-5.5%</b>	<b>47.1%</b>	<b>1.9%</b>
<b>Tameside</b>		<b>1,637</b>	<b>-3.9%</b>	<b>43.0%</b>	<b>2.5%</b>
<b>Trafford</b>		<b>1,182</b>	<b>-2.9%</b>	<b>47.4%</b>	<b>1.9%</b>
<b>Wigan</b>		<b>2,315</b>	<b>-3.2%</b>	<b>43.5%</b>	<b>2.6%</b>
<b>Greater Manchester</b>		<b>20,217</b>	<b>-2.2%</b>	<b>50.3%</b>	<b>2.6%</b>
<b>North West</b>		<b>48,473</b>	<b>-2.4%</b>	<b>41.6%</b>	<b>2.4%</b>
<b>United Kingdom</b>		<b>418,233</b>	<b>-1.9%</b>	<b>45.1%</b>	<b>2.3%</b>

Source: Claimant Count, DWP, 2009

The female JSA claimant count decreased by 448 (2.2%) to 20,217 in GM in December 2009 (a 2.6% claimant rate). This rate was higher than the North West (2.4%) or the UK (2.3%), but closer to the national average by comparison to the male claimant rate.

Across the local authorities, the highest female claimant rate was experienced in Rochdale (3.2%), partly due to the high rates in Central and Falinge ward (6.7%). Manchester is not far behind, with a rate of 3.1%. Salford has seen the greatest annual increase in female claimants of the districts – a 62.1% rise from 1,178 claimants in December 2008 to 1,909 in December 2009.

Only Oldham and Salford (both 0.8%) experienced a monthly increases in their female claimant counts, whilst Stockport experienced the greatest decrease of 5.5% to 1,549 female claimants.

# JOBSEEKER'S ALLOWANCE CLAIMANTS: CLAIMANTS BY GENDER

The male and female claimant rates differ significantly across all areas. Within GM, Trafford regularly achieves the lowest male and female claimant rates – 5.0% and 1.9% respectively in December 2009. Yet this month, Stockport has reduced its female claimant rate to that of Trafford – 1.9%.

**Rochdale continues to experience the highest claimant rate.** Yet the ward of Central and Falinge, which has partly driven Rochdale rising claimant rate and is the highest rate in the city region, is now seeing decreases in both male and female claimants. However, the male claimant level across the borough is increasing, implying that the job opportunities for males in Rochdale are decreasing.

**The differential between male and female claimant rates was significant in each district.** The greatest differential was experienced in Rochdale, with a 5.1 percentage point difference between the male and female claimant rates – a significant divergence. In Rochdale, the female claimant level is just over a third of the male claimant level (34.9%).

**As can be seen from figures 7 and 8, female claimant rates have shifted differently to male rates:** whereas the male claimant rate began to level off in April 2009 and peaked at 7.2% in September 2009, female rates continued growing and peaked earlier in August.

Figure 6: Male and Female JSA Claimant rate by District, December 2009

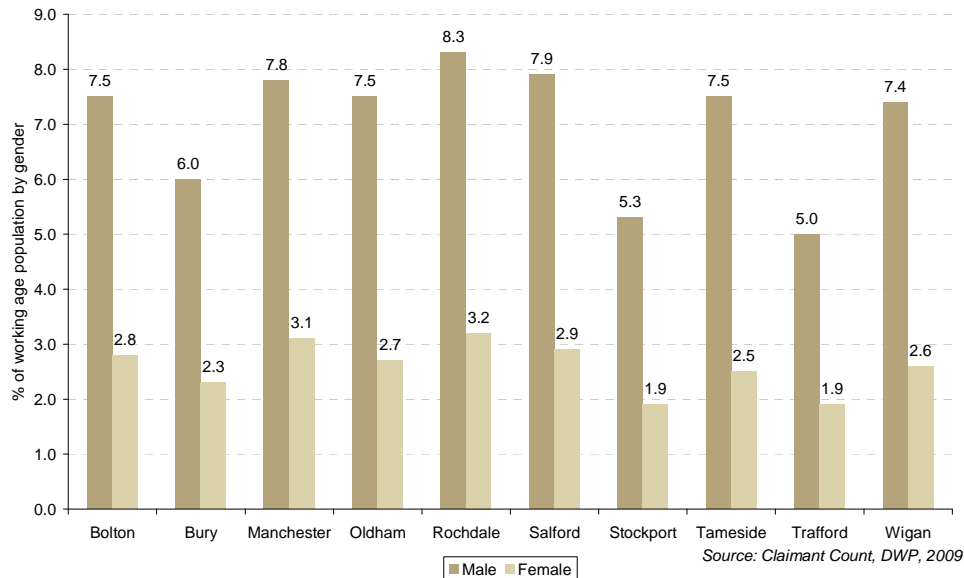


Figure 7: Historical Male JSA Claimant Rate, December 2007 – December 2009

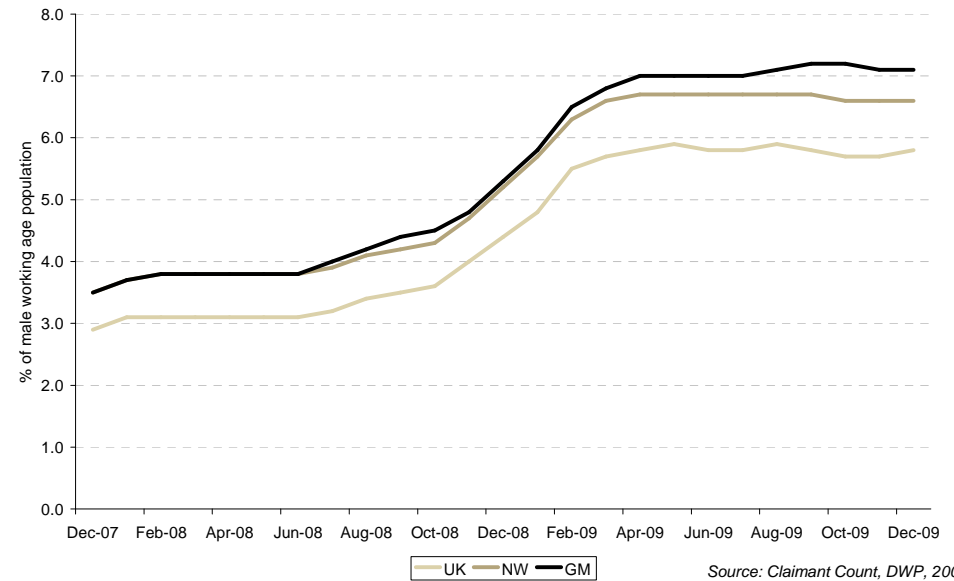
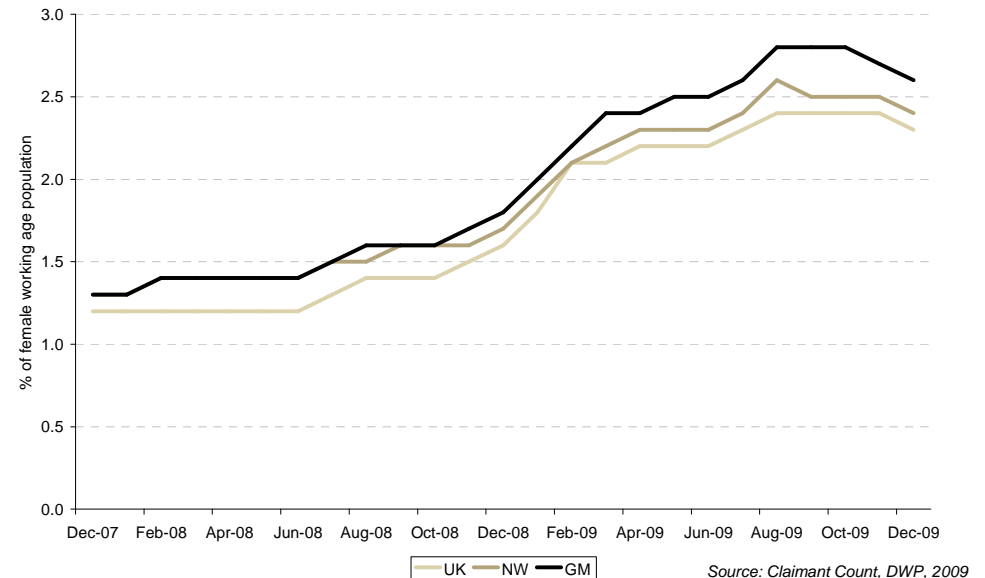


Figure 8: Historical Female JSA Claimant Rate, December 2007 – December 2009



# JOBSEEKER'S ALLOWANCE CLAIMANTS: LONG-TERM CLAIMANTS

**Figure 9: Long-term JSA claimants (over 6 months) by proportion of total JSA claimants, December 2008 – December 2009**

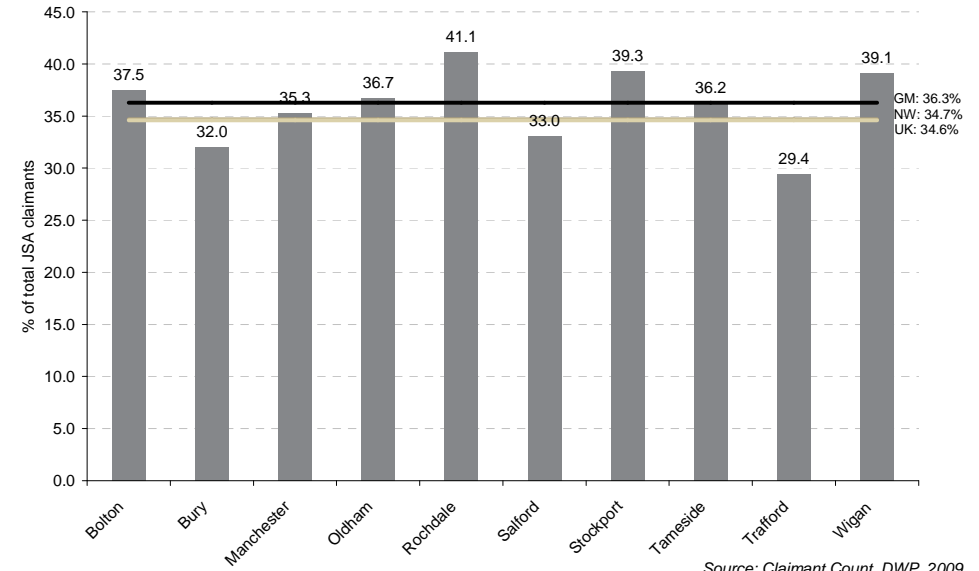
District	Ward	Long-term JSA Claimants			
		Number	Monthly Change (%)	Annual Change (%)	% of total JSA
Rochdale	Central and Falinge	440	10.0%	95.6%	51.7%
Rochdale	Balderstone	245	0.0%	157.9%	50.8%
Wigan	Norley	255	2.0%	142.9%	47.7%
Stockport	Brinnington	350	6.1%	118.8%	47.3%
Wigan	Newtown	250	-2.0%	127.3%	46.6%
Wigan	Whelley	205	7.9%	115.8%	45.9%
Rochdale	Spotland	125	4.2%	127.3%	45.6%
Rochdale	Castleton	160	-3.0%	166.7%	44.8%
Rochdale	Smallbridge and Wardleworth	275	1.9%	111.5%	44.5%
Wigan	Ince	230	4.5%	91.7%	44.4%
<b>Bolton</b>		<b>3,145</b>	<b>2.4%</b>	<b>139.2%</b>	<b>37.5%</b>
<b>Bury</b>		<b>1,510</b>	<b>1.0%</b>	<b>158.1%</b>	<b>32.0%</b>
<b>Manchester</b>		<b>6,360</b>	<b>1.6%</b>	<b>92.1%</b>	<b>35.3%</b>
<b>Oldham</b>		<b>2,530</b>	<b>2.6%</b>	<b>127.9%</b>	<b>36.7%</b>
<b>Rochdale</b>		<b>3,060</b>	<b>3.4%</b>	<b>149.8%</b>	<b>41.1%</b>
<b>Salford</b>		<b>2,595</b>	<b>2.0%</b>	<b>125.7%</b>	<b>33.0%</b>
<b>Stockport</b>		<b>2,470</b>	<b>0.6%</b>	<b>156.0%</b>	<b>39.3%</b>
<b>Tameside</b>		<b>2,480</b>	<b>2.7%</b>	<b>155.7%</b>	<b>36.2%</b>
<b>Trafford</b>		<b>1,355</b>	<b>2.7%</b>	<b>139.8%</b>	<b>29.4%</b>
<b>Wigan</b>		<b>3,795</b>	<b>2.4%</b>	<b>137.2%</b>	<b>39.1%</b>
<b>Greater Manchester</b>		<b>29,300</b>	<b>2.1%</b>	<b>129.0%</b>	<b>36.3%</b>
<b>North West</b>		<b>67,580</b>	<b>0.7%</b>	<b>97.7%</b>	<b>34.7%</b>
<b>United Kingdom</b>		<b>542,045</b>	<b>1.2%</b>	<b>107.1%</b>	<b>34.6%</b>

Source: Claimant Count, DWP, 2009

The long-term (over 6 months) JSA claimant count stood at 29,300 in GM in December 2009 (36.3% of the total JSA claimant level). This was higher than the North West (34.7%) and UK (34.6%) proportions. Rochdale had the highest proportion of long-term claimants (41.1%), with five of its wards within the top ten highest proportions. Over half of Balderstone's and Central and Falinge's JSA claimants had been claiming for more than 6 months.

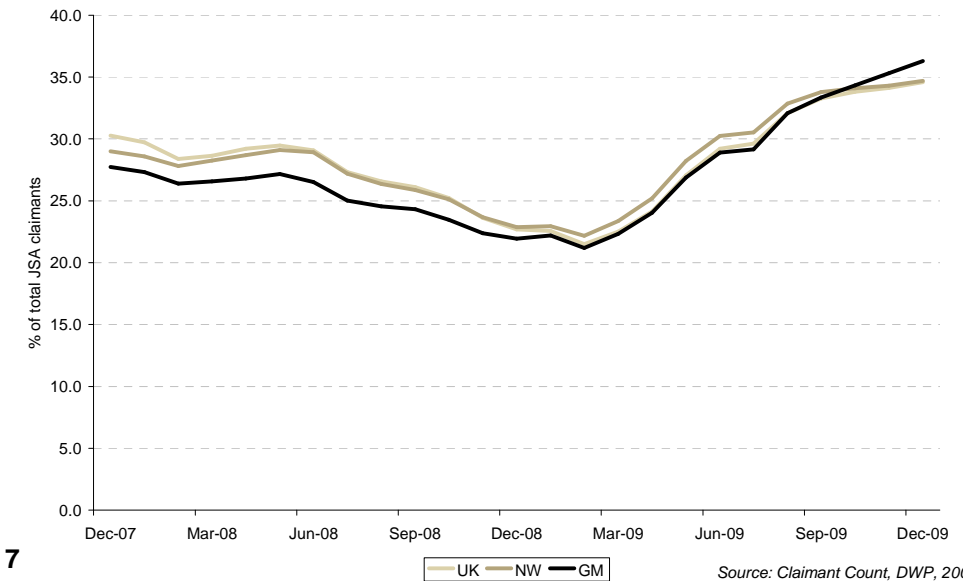
As figure 11 shows, the on-flow of new claimants during the early part of the recession reduced the proportion of long-term claimants, but as these individuals continued to claim, the proportion began to increase.

**Figure 10: Long-term JSA claimants as a proportion of total JSA claimants by district, December 2009**



Source: Claimant Count, DWP, 2009

**Figure 11: Historical Long-term JSA claimants as a proportion of total JSA claimants, December 2007 – December 2009**



Source: Claimant Count, DWP, 2009

# JOBSEEKER'S ALLOWANCE CLAIMANTS: YOUTH CLAIMANTS

**Figure 12: Youth JSA claimants (16 to 24 years old) by proportion of total JSA claimants, December 2008 – December 2009**

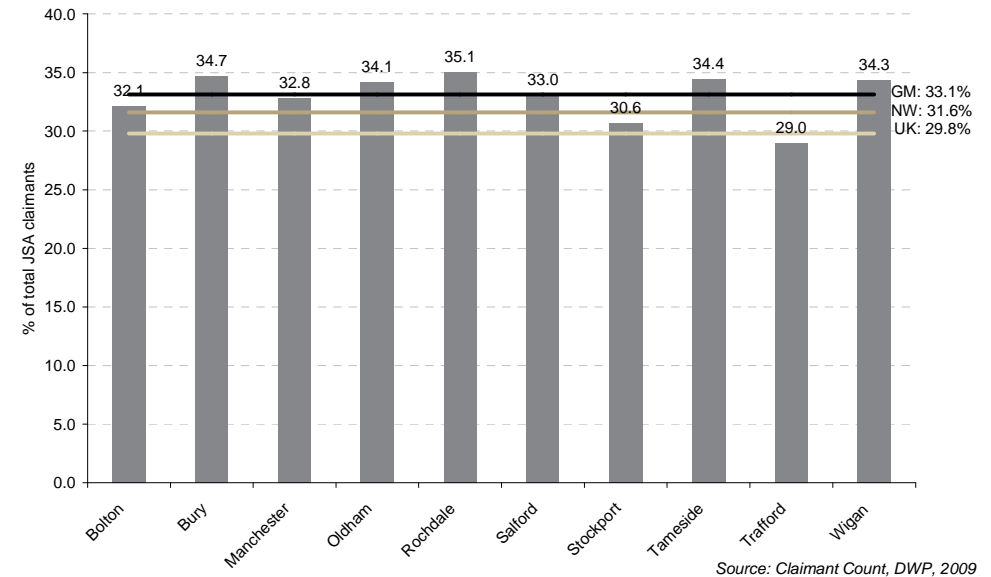
District	Ward	Youth JSA Claimants			
		Number	Monthly Change (%)	Annual Change (%)	% of total JSA
Oldham	Royton North	85	13.3%	88.9%	41.3%
Oldham	Crompton	75	7.1%	50.0%	40.5%
Bury	Radcliffe South	165	-5.7%	50.0%	40.1%
Rochdale	Healey	140	-3.4%	33.3%	40.1%
Tameside	Ashton Hurst	155	3.3%	63.2%	39.6%
Manchester	Withington	140	-15.2%	47.4%	39.5%
Manchester	Lightbowne	195	5.4%	56.0%	39.5%
Salford	Little Hulton	210	-4.5%	40.0%	39.5%
Wigan	Norley	210	-2.3%	13.5%	39.3%
Wigan	Bedford-Astley	140	12.0%	47.4%	38.9%
<b>Bolton</b>		<b>2,695</b>	<b>-1.3%</b>	<b>41.8%</b>	<b>32.1%</b>
<b>Bury</b>		<b>1,635</b>	<b>-1.5%</b>	<b>40.3%</b>	<b>34.7%</b>
<b>Manchester</b>		<b>5,910</b>	<b>-3.7%</b>	<b>34.0%</b>	<b>32.8%</b>
<b>Oldham</b>		<b>2,350</b>	<b>-0.4%</b>	<b>36.6%</b>	<b>34.1%</b>
<b>Rochdale</b>		<b>2,610</b>	<b>-0.9%</b>	<b>44.2%</b>	<b>35.1%</b>
<b>Salford</b>		<b>2,595</b>	<b>0.0%</b>	<b>43.8%</b>	<b>33.0%</b>
<b>Stockport</b>		<b>1,925</b>	<b>-5.4%</b>	<b>48.6%</b>	<b>30.6%</b>
<b>Tameside</b>		<b>2,360</b>	<b>-1.3%</b>	<b>42.2%</b>	<b>34.4%</b>
<b>Trafford</b>		<b>1,335</b>	<b>-2.6%</b>	<b>35.5%</b>	<b>29.0%</b>
<b>Wigan</b>		<b>3,325</b>	<b>-2.2%</b>	<b>30.9%</b>	<b>34.3%</b>
<b>Greater Manchester</b>		<b>26,745</b>	<b>-2.1%</b>	<b>38.7%</b>	<b>33.1%</b>
<b>North West</b>		<b>61,555</b>	<b>-1.7%</b>	<b>24.8%</b>	<b>31.6%</b>
<b>United Kingdom</b>		<b>466,890</b>	<b>-1.3%</b>	<b>31.4%</b>	<b>29.8%</b>

Source: Claimant Count, DWP, 2009

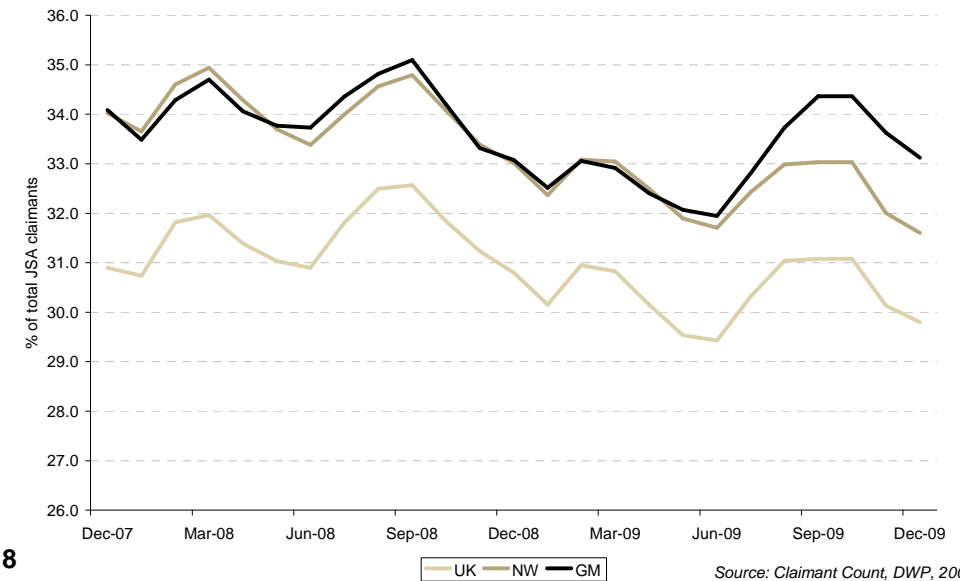
The youth (aged 16-24) JSA claimant count stood at 26,745 in GM in December 2009 (33.1% of the total JSA claimant level). This was higher than the North West (31.6%) and UK (29.8%) proportions. Rochdale experienced the highest proportion of youth claimants (35.1%), yet four Oldham, Manchester and Wigan each have two wards within the top ten highest proportions, compared to just one – Healey (40.1%) – in Rochdale.

As figure 14 shows, the proportion of youth claimants shows a continuing pattern that follows the academic year. Though the youth claimant proportion is currently falling, the current pattern suggests that it may be expected to increase again in January or February 2010.

**Figure 13: JSA Youth claimants as a proportion of total JSA claimants by district, December 2009**



**Figure 14: Historical JSA Youth claimants as a proportion of total JSA claimants, December 2007 – December 2009**



# JOBSEEKER'S ALLOWANCE FLOWS: TOTAL CLAIMANT FLOWS

Figure 15: JSA claimant flows by age and duration, December 2009

Age	Off-Flow Duration of Claim					Total On-Flows	Net Flows
	1 to 26 weeks	26 to 52 weeks	52 to 104 weeks	104 weeks and above	Total		
Under 17	5	0	0	0	10	55	45
17	95	10	0	0	105	150	45
18	715	75	0	0	790	980	190
19	745	165	20	0	930	850	-80
20-24	3,215	635	105	0	3,960	3,430	-530
25-29	1,680	365	135	0	2,185	2,105	-80
30-34	985	230	115	5	1,335	1,410	75
35-39	910	240	100	5	1,250	1,275	25
40-44	840	200	100	10	1,165	1,220	55
45-49	755	195	85	5	1,040	1,045	5
50-54	605	140	70	5	810	765	-45
55-59	435	120	50	0	605	580	-25
Over 60	145	35	15	0	200	165	-35
<b>Total</b>	<b>11,135</b>	<b>2,405</b>	<b>795</b>	<b>40</b>	<b>14,380</b>	<b>14,035</b>	<b>-345</b>

Source: Claimant Count Flows, DWP, 2009. Note: Columns may not sum due to rounding

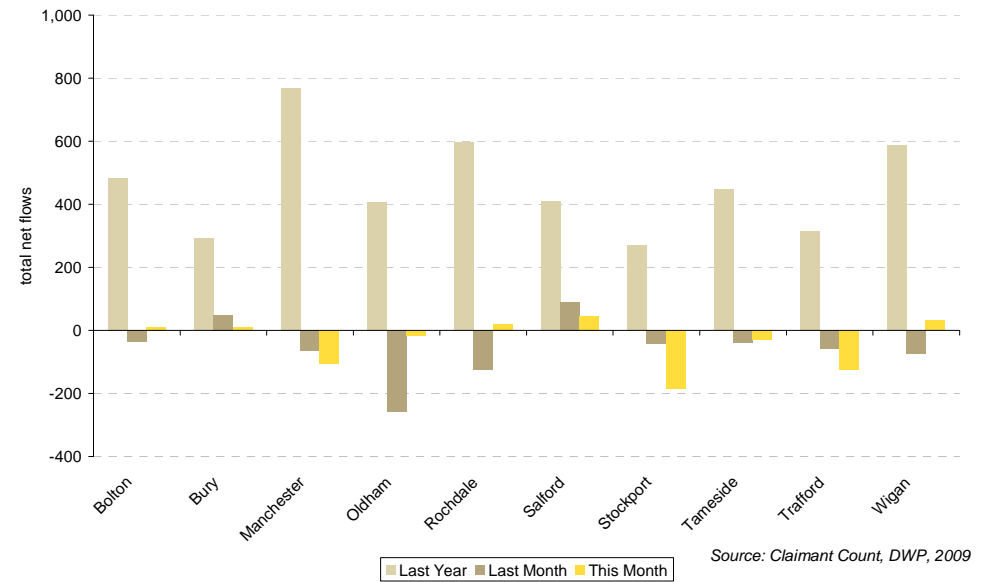
The total net flow of JSA claimants in GM was an off-flow of 345, compared to last month's net off-flow of 560. The greatest number of net off-flows occurred in the 20-24 year old age bracket (530 net off-flows). Comparatively, the 18 year age group saw net on-flows of 190.

The majority of off-flows from JSA in GM (77.4%) occurred within the first 6 months of claiming. This proportion has seen a decrease from the November level of 78.3%.

Figures 17 and 18 highlight how the on-flows and off-flows have altered over the course of the last two years. Almost all districts (Bury and Salford being the exceptions) have experienced net off-flows in the number of claimants in either December or November. In addition, the divergence between on-flows and off-flows has significantly reduced from a year ago. At its greatest point during the recession there was a net on-flow of 8,325 claimants. Both on- and off-flows have seen a decrease this month as the UK heads out of the recession.

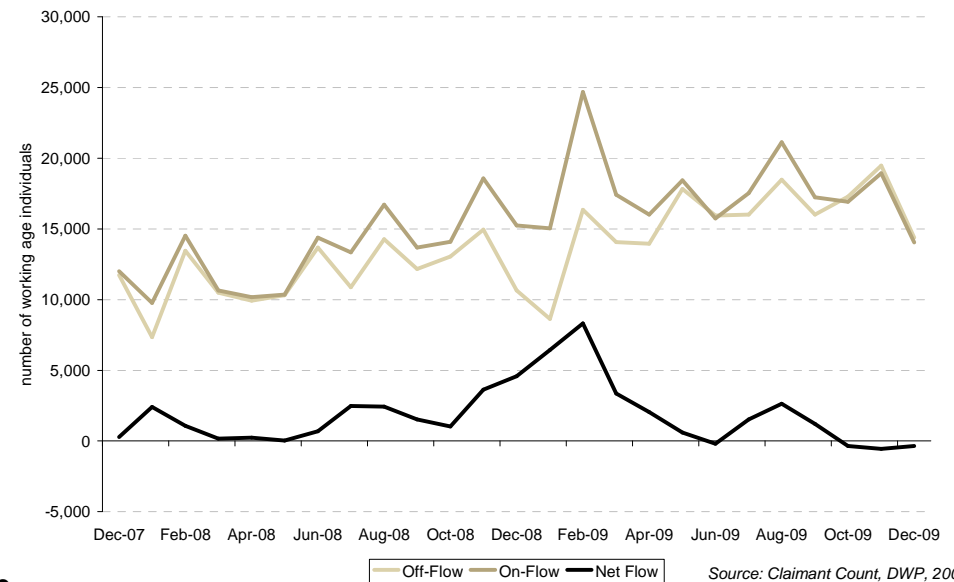
On-flows have mainly come through elementary trades (2,995 on-flows) and sales occupations (1,990), and leave mainly into similar occupations.

Figure 16: Net flows of JSA claimants by district, December 2008 – December 2009



Source: Claimant Count, DWP, 2009

Figure 17: On-flows, off-flows and net flows of JSA claimants in Greater Manchester, December 2007 – December 2009



Source: Claimant Count, DWP, 2009

**Figure 18: On-flows of JSA claimants by usual occupation, December 2008 – December 2009**

Occupation	On-Flow			
	Number	Monthly Change (%)	Annual Change (%)	Percentage of total
	Dec09	Nov09- Dec09	Dec08 - Dec09	Dec 09
00 : Occupation unknown	105	-27.6%	31.3%	0.7%
11 : Corporate Managers	505	-27.3%	-7.3%	3.6%
12 : Managers and Proprietors in Agriculture	135	-18.2%	28.6%	1.0%
21 : Science and Technology Prof.	200	-33.3%	-4.8%	1.4%
22 : Health Prof.	5	-50.0%	-	0.0%
23 : Teaching and Research Prof.	125	-39.0%	31.6%	0.9%
24 : Business and Public Service Prof.	130	-39.5%	4.0%	0.9%
31 : Science and Technology Assoc. Prof.	175	-30.0%	6.1%	1.2%
32 : Health and Social Welfare Assoc. Prof.	90	-35.7%	5.9%	0.6%
33 : Protective Service Occ.	15	-50.0%	0.0%	0.1%
34 : Culture, Media and Sports Occ.	280	-27.3%	27.3%	2.0%
35 : Business and Public Service Assoc Prof.	250	-36.7%	-26.5%	1.8%
41 : Administrative Occ.	1,130	-32.9%	-7.8%	8.1%
42 : Secretarial and Related Occ.	185	-17.8%	5.7%	1.3%
51 : Skilled Agricultural Trades	135	-30.8%	-15.6%	1.0%
52 : Skilled Metal and Electronic Trades	590	-22.9%	-0.8%	4.2%
53 : Skilled Construction and Building Trades	1,025	-13.1%	-15.3%	7.3%
54 : Textiles, Printing, Other Skilled Trades	215	-17.3%	-4.4%	1.5%
61 : Caring Personal Service Occ.	530	-35.4%	24.7%	3.8%
62 : Leisure and Other Personal Service Occ.	210	-31.1%	2.4%	1.5%
71 : Sales Occ.	1,990	-26.7%	13.7%	14.2%
72 : Customer Service Occ.	430	-27.1%	-5.5%	3.1%
81 : Process, Plant and Machine Operatives	500	-30.6%	-28.6%	3.6%
82 : Transport and Mobile Machine Drivers and Operatives	845	-22.1%	-24.6%	6.0%
91 : Elementary Trades, Plant and Storage Related Occ.	2,995	-22.8%	-21.6%	21.3%
92 : Elementary Administration and Service Occ.	1,255	-20.1%	5.9%	8.9%
<b>TOTAL</b>	<b>14,035</b>	<b>-25.9%</b>	<b>-7.8%</b>	<b>100.0%</b>

Source: Claimant Count Flows, DWP, 2009

## JOBSEEKER'S ALLOWANCE FLOWS: OCCUPATION

**Figure 19: Off-flows of JSA claimants into employment by sought occupation, December 2008 – December 2009**

Occupation	Off-Flow into Employment			
	Number	Monthly Change (%)	Annual Change (%)	Percentage of total
	Dec 09	Nov09 - Dec09	Dec08 - Dec09	Dec 09
00 : Occupation unknown	0	-	-	0.0%
11 : Corporate Managers	360	-21.7%	53.2%	5.5%
12 : Managers and Proprietors in Agriculture	80	-5.9%	60.0%	1.2%
21 : Science and Technology Prof.	135	-15.6%	80.0%	2.1%
22 : Health Prof.	5	-66.7%	0.0%	0.1%
23 : Teaching and Research Prof.	85	-43.3%	21.4%	1.3%
24 : Business and Public Service Prof.	115	-17.9%	76.9%	1.8%
31 : Science and Technology Assoc. Prof.	110	-21.4%	57.1%	1.7%
32 : Health and Social Welfare Assoc. Prof.	70	0.0%	75.0%	1.1%
33 : Protective Service Occ.	10	0.0%	100.0%	0.2%
34 : Culture, Media and Sports Occ.	175	-25.5%	84.2%	2.7%
35 : Business and Public Service Assoc Prof.	210	-19.2%	44.8%	3.2%
41 : Administrative Occ.	750	-14.3%	38.9%	11.4%
42 : Secretarial and Related Occ.	110	-21.4%	37.5%	1.7%
51 : Skilled Agricultural Trades	45	50.0%	28.6%	0.7%
52 : Skilled Metal and Electronic Trades	270	-20.6%	116.0%	4.1%
53 : Skilled Construction and Building Trades	380	-24.0%	46.2%	5.8%
54 : Textiles, Printing, Other Skilled Trades	100	-23.1%	11.1%	1.5%
61 : Caring Personal Service Occ.	270	-15.6%	58.8%	4.1%
62 : Leisure and Other Personal Service Occ.	90	-10.0%	20.0%	1.4%
71 : Sales Occ.	825	-19.9%	58.7%	12.6%
72 : Customer Service Occ.	240	-21.3%	37.1%	3.7%
81 : Process, Plant and Machine Operatives	245	-26.9%	40.0%	3.7%
82 : Transport and Mobile Machine Drivers and Operatives	400	-25.2%	35.6%	6.1%
91 : Elementary Trades, Plant and Storage Related Occ.	1,065	-24.5%	33.1%	16.2%
92 : Elementary Administration and Service Occ.	420	-20.8%	55.6%	6.4%
<b>TOTAL</b>	<b>6,565</b>	<b>-21.1%</b>	<b>47.4%</b>	<b>100.0%</b>

Source: Claimant Count Flows, DWP, 2009

# JOBSEEKER'S ALLOWANCE FLOWS: REASONS FOR OFF-FLOWS

**Figure 20: Reason for off-flows from the JSA claimant count, December 2008 – December 2009**

Reason for off-flow	JSA Claimant Off-Flows			
	Number	Monthly Change (%)	Annual Change (%)	Percent of total
	Dec 09	Nov09 - Dec09	Dec08-Dec09	Dec 09
Found work or increased work to more than 16 hours a week	6,565	-21.1%	47.4%	45.7%
Claimed benefit other than JSA	490	-19.7%	42.0%	3.4%
Claimed Income Support	205	-8.9%	86.4%	1.4%
Claimed Incapacity Benefit	95	-34.5%	-17.4%	0.7%
Claimed another benefit	170	-26.1%	47.8%	1.2%
Government supported training	200	21.2%	-79.5%	1.4%
Education or approved training	70	-62.2%	27.3%	0.5%
Gone abroad	465	-35.0%	31.0%	3.2%
Ceased claiming	215	-27.1%	53.6%	1.5%
Failed to sign	4,375	-32.9%	45.3%	30.4%
Other reasons	440	-33.3%	35.4%	3.1%
Retirement age reached	15	-25.0%	-25.0%	0.1%
Not known	1,560	-22.6%	56.8%	10.8%
All reasons	14,380	-26.2%	35.0%	100.0%

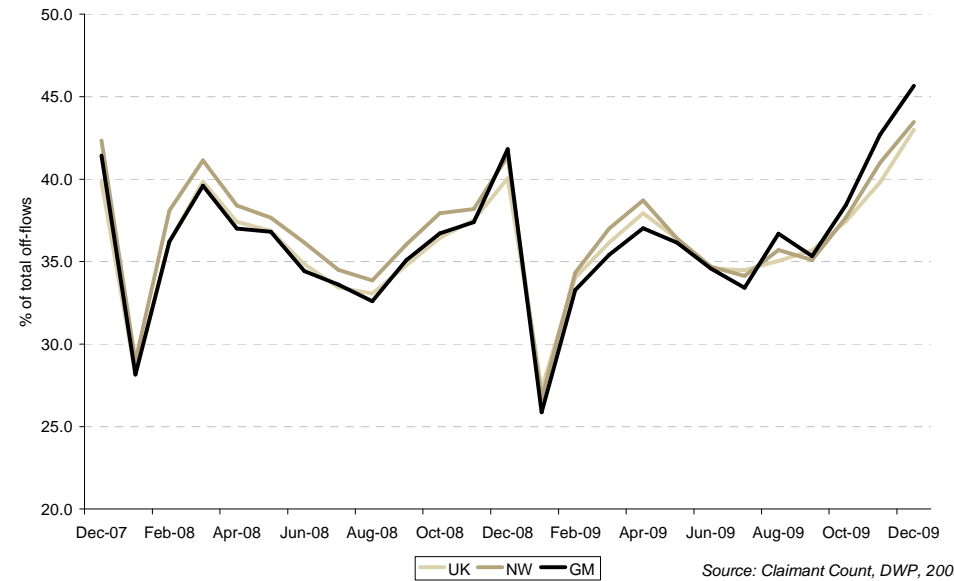
Source: Claimant Count Flows, DWP, 2009

The main reason for an off-flow from the JSA register was because the claimant found work or increased work to more than 16 hours a week (6,565 off-flows). This accounted for 45.7% of the total number of claimants moving off the register. Annually, there was an increase of 47.4% in the number of claimants moving into employment.

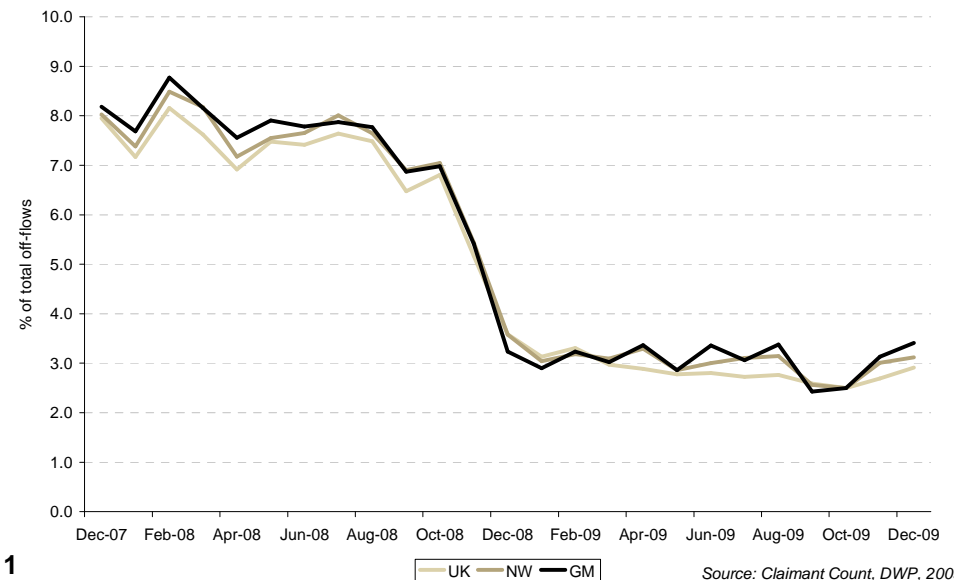
Across GM, 490 claimants moved from JSA to another benefit in December 2009. Most of these claimant off-flows were to income support (205). 95 claimants flowed onto IB/ESA, an annual decrease of 17.4%. As can be seen in figure 22, the proportion of off-flows moving to another benefit has more than halved in 2 years.

Only 1.4% of off-flows (200 off-flows) moved into government supported training in December, and a further 70 (0.5%) moved into education or approved training. Nearly a third of claimant off-flows (30.4%) were due to claimants failing to sign on, indicating these claimants may yet claim again. However, DWP expects that the majority of these individuals moved into work.

**Figure 21: Proportion of off-flows moving into employment, December 2007 – December 2009**



**Figure 22: Proportion of off-flows moving onto another benefit, December 2007 – December 2009**



## JOBCENTRE PLUS NOTIFIED VACANCIES: TOTAL VACANCIES

Figure 23: JCP notified vacancies by number, December 2008 – December 2009

District	Ward	JCP Notified Vacancies			
		Number	Monthly Change (%)	Annual Change (%)	Vacancy Ratio to JSA Claimants
		Dec 09	Nov09 - Dec09	Dec08 - Dec09	Dec 09
Manchester	Central	1,817	-22.4%	30.9%	2.60
Salford	Ordsall	526	10.5%	104.7%	1.30
Trafford	Altrincham	388	-20.8%	231.6%	1.78
Trafford	Broadheath	367	-44.7%	203.3%	1.67
Manchester	Ardwick	314	3.0%	0.6%	0.52
Trafford	Davyhulme East	285	-63.5%	41.8%	1.91
Stockport	Cheadle Hulme North	283	-18.0%	135.8%	1.16
Stockport	Bredbury	277	-59.1%	15.4%	0.92
Rochdale	Middleton North	268	-67.9%	72.9%	0.79
Wigan	Swinley	267	-16.6%	49.2%	0.80
<b>Bolton</b>		<b>1,146</b>	<b>-30.3%</b>	<b>20.0%</b>	<b>0.14</b>
<b>Bury</b>		<b>838</b>	<b>-6.8%</b>	<b>22.3%</b>	<b>0.18</b>
<b>Manchester</b>		<b>3,752</b>	<b>-29.4%</b>	<b>16.1%</b>	<b>0.21</b>
<b>Oldham</b>		<b>1,492</b>	<b>-26.0%</b>	<b>152.0%</b>	<b>0.22</b>
<b>Rochdale</b>		<b>994</b>	<b>-47.6%</b>	<b>23.6%</b>	<b>0.13</b>
<b>Salford</b>		<b>1,558</b>	<b>-28.8%</b>	<b>50.7%</b>	<b>0.20</b>
<b>Stockport</b>		<b>1,842</b>	<b>-27.5%</b>	<b>36.5%</b>	<b>0.29</b>
<b>Tameside</b>		<b>725</b>	<b>-12.1%</b>	<b>42.4%</b>	<b>0.11</b>
<b>Trafford</b>		<b>2,178</b>	<b>-29.0%</b>	<b>80.7%</b>	<b>0.47</b>
<b>Wigan</b>		<b>1,311</b>	<b>-25.0%</b>	<b>32.6%</b>	<b>0.14</b>
<b>Greater Manchester</b>		<b>15,836</b>	<b>-28.5%</b>	<b>39.5%</b>	<b>0.20</b>
<b>North West</b>		<b>37,569</b>	<b>-29.5%</b>	<b>10.9%</b>	<b>0.19</b>
<b>Great Britain</b>		<b>262,546</b>	<b>-29.9%</b>	<b>10.6%</b>	<b>0.17</b>

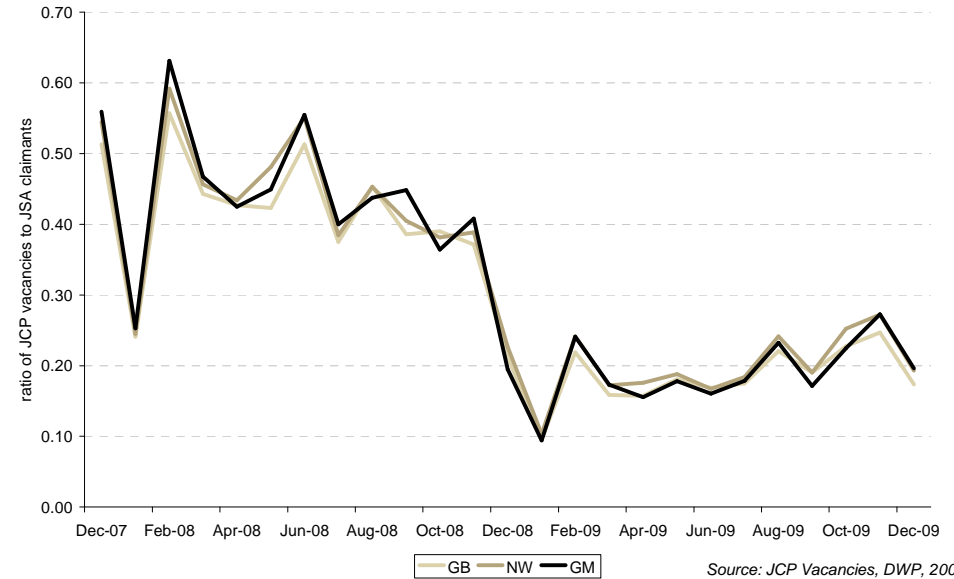
Source: JCP Vacancies, DWP, 2009

The total number of vacancies in GM stood at 15,836 in December 2009 – a 28.5% monthly decrease in notified vacancies. This was a smaller decrease than the North West (29.5%) and Great Britain (29.9%).

The City of Manchester experienced the highest number of vacancies (3,752). Bury (6.8%) experienced the smallest monthly decrease in claimants, and Rochdale (47.6%) experienced the greatest.

Some districts have begun to show annual increases in vacancies – in particular, Oldham has experienced a 152.0% increase and Trafford has experienced a growth of 80.7%.

Figure 24: Ratio of JCP notified vacancies to JSA claimants by area, December 2007 – December 2009



Source: JCP Vacancies, DWP, 2009

Within GM, the ratio of vacancies to JSA claimants was highest in Trafford (0.47), with low numbers of claimants and the second largest number of vacancies in the city region. Comparatively, Tameside, with a low number of notified vacancies and a relatively higher number of claimants, continues to experience the lowest ratio of 0.11 – the equivalent of around 11 job vacancies for every 100 claimants.

As can be seen from figures 25 and 26, sales occupations experienced the greatest numbers of vacancies in the last month (2,578 vacancies). This was followed by vacancies for business and public service associate professionals (2,126 vacancies). This is likely due to more businesses gearing up for Christmas spending patterns amongst consumers. However, these occupations were not where the majority of new claimants came from - e.g. elementary trades.

The majority of vacancies were within the real estate, renting and business activities sector (10,001 vacancies, or 63.2% of total vacancies). This is a decrease of 26.7% on the 13,644 vacancies in November. Construction vacancies saw the greatest nominal monthly increase of 135 vacancies (39.9%).

## JOBCENTRE PLUS NOTIFIED VACANCIES: OCCUPATION AND INDUSTRY

Figure 25: Vacancies by occupation, December 2008 – December 2009

Occupation	JCP Notified Vacancies			
	Number	Monthly Change (%)	Annual Change (%)	Percentage of total
	Dec09	Nov09 - Dec 09	Dec08 - Dec09	Dec09
11 : Corporate Managers	890	55.1%	118.1%	5.6%
12 : Managers and Proprietors in Agriculture and Services	77	-47.3%	-16.3%	0.5%
21 : Science and Technology Professionals	101	-9.8%	46.4%	0.6%
22 : Health Professionals	18	-10.0%	50.0%	0.1%
23 : Teaching and Research Professionals	227	-25.8%	26.8%	1.4%
24 : Business and Public Service Professionals	105	-49.8%	-19.8%	0.7%
31 : Science and Technology Associate Professionals	66	-36.5%	-23.3%	0.4%
32 : Health and Social Welfare Associate Professionals	356	-25.5%	58.9%	2.2%
33 : Protective Service Occupations	3	-70.0%	50.0%	0.0%
34 : Culture, Media and Sports Occupations	179	5.9%	371.1%	1.1%
35 : Business and Public Service Associate Professionals	2,126	14.8%	203.3%	13.4%
41 : Administrative Occupations	1,073	-42.8%	-16.6%	6.8%
42 : Secretarial and Related Occupations	255	-22.5%	22.0%	1.6%
51 : Skilled Agricultural Trades	16	33.3%	60.0%	0.1%
52 : Skilled Metal and Electronic Trades	350	10.4%	21.5%	2.2%
53 : Skilled Construction and Building Trades	446	13.5%	54.3%	2.8%
54 : Textiles, Printing and Other Skilled Trades	220	-48.8%	-16.7%	1.4%
61 : Caring Personal Service Occupations	1,310	-5.3%	28.1%	8.3%
62 : Leisure and Other Personal Service Occupations	214	-7.8%	47.6%	1.4%
71 : Sales Occupations	2,578	-48.7%	84.3%	16.3%
72 : Customer Service Occupations	1,034	-22.8%	52.3%	6.5%
81 : Process, Plant and Machine Operatives	543	-15.7%	73.5%	3.4%
82 : Transport and Mobile Machine Drivers and Operatives	694	-46.6%	42.2%	4.4%
91 : Elementary Trades, Plant and Storage Related Occupations	1,128	-45.1%	-3.8%	7.1%
92 : Elementary Administration and Service Occupations	1,827	-35.0%	-1.1%	11.5%

Source: JCP Vacancies data, 2009

Figure 26: Vacancies in Manchester by industry, December 2008 – December 2009

Industry	JCP Notified Vacancies			
	Number	Monthly Change (%)	Annual Change (%)	Percentage of total
	Dec09	Nov09 - Dec09	Dec08 - Dec09	Dec 09
A : Agriculture, hunting and forestry	27	-42.6%	-18.2%	0.2%
B : Fishing	1	-	-	0.0%
C : Mining and quarrying	1	-75.0%	-	0.0%
D : Manufacturing	398	-34.1%	-16.2%	2.5%
E : Electricity, gas and water supply	74	-11.9%	27.6%	0.5%
F : Construction	473	39.9%	124.2%	3.0%
G : Wholesale and retail trade; repair of motor vehicles, motorcycles and personal and household goods	957	-54.6%	18.6%	6.0%
H : Hotels and restaurants	526	-33.3%	-4.9%	3.3%
I : Transport, storage and communication	400	-47.3%	97.0%	2.5%
J : Financial intermediation	401	-24.2%	37.3%	2.5%
K : Real estate, renting and business activities	10,001	-26.7%	56.7%	63.2%
L : Public administration and defence; compulsory social security	389	-15.1%	-51.8%	2.5%
M : Education	322	-26.3%	49.8%	2.0%
N : Health and social work	1,245	-12.9%	43.9%	7.9%
O : Other community, social and personal service activities	558	-35.4%	24.3%	3.5%
P : Private households with employed persons	61	60.5%	1120.0%	0.4%
Q : Extra-territorial organisation and bodies	2	-33.3%	-	0.0%

Source: JCP Vacancies data, 2009

**Significant shifts in the number of vacancies reported to JCP were experienced over time.** Transport, storage and communications vacancies, for example, experienced a 47.3% monthly decrease but a 97.0% increase over the year.

**Most occupations have seen increases in vacancies over the past month.** A notable exception is administrative occupations, where there was a 16.6% decrease in vacancies over the year.

## TECHNICAL NOTE

Please use caution when interpreting economic data. The data provided in the above tables is given as an indicator of unemployment trends and is reliant on accurate reporting by the DWP and JCP.

There are three areas in which caution should be especially used:

### Interpretation of the figures

The JSA claimant figures are exactly those reported by JCP via DWP. However, this is not the official measure of unemployment, and is indicative only of the true level of unemployed individuals. Whilst throughout this document, reference to the JSA claimants includes 'unemployed', 'unemployment' and the 'unemployment rate', the more accurate measure of unemployment, the ILO unemployment rate, is reported quarterly in the Commission for the New Economy's Worklessness Monitor, as it is provided quarterly. As such, it is not reported here.

The difference between the two measures is important to understand. Whilst the JSA claimant count covers all JSA claimants and NIC claimants, it does not cover those individuals who are actively seeking a job, have no job and are not claiming either of these two benefits. For example, individuals that have sufficient funds to support themselves after losing a job may not wish to, or be eligible to, claim JSA. As such, they are unemployed, but are not counted in the claimant count. They would, however, be counted in the ILO unemployment rate.

Vacancy data also requires some interpretation. The figures provided by JCP are all those notified to JCP. They do not, however, cover the entirety of the vacancies in the market, and it has been estimated that JCP notified vacancies make up roughly 40% of the total number of vacancies within the economy.

### Rounding of the figures

DWP round some figures when reporting to protect the anonymity of claimants; and some figures have been rounded by the Commission for the New Economy. As such, the figures in some tables may not sum. This is not due to inaccuracies.

In addition, the age and duration data for JSA claimants excludes non-computerised clerical claims, which account for around 1% of claims. The 1% difference does not make a significant difference to the figures.

### Calculations by the Commission for the New Economy

Percentage changes are calculated by the Commission for the New Economy. These calculations need to be treated with caution. The base values used affects percentage increases. For example, for a small base, a small change in the claimant volume can lead to a large percentage change. This is particularly relevant at the ward level, where the addition or subtraction of just a small number of individuals can lead to large percentage increases / decreases.

Calculations are also provided for the vacancy to JSA claimant ratio. These figures take the number of claimants and vacancies together, and provide a value for how many vacancies there are in any one area for every JSA claimant in that area. These calculations are not provided by ONS or DWP, but instead are an indicative calculation provided to show the jobs to labour ratio for the unemployed in any one area.

## GLOSSARY

### **DWP**

Department for Work and Pensions.

### **JCP**

Jobcentre Plus. JCP is a government agency supporting people of working age from welfare into work and helping employers to fill their vacancies.

### **Jobseeker's Allowance**

Jobseeker's allowance (JSA) is the most common unemployment benefit. It is mainly paid when eligible individuals don't have a job and are looking for work, however in certain circumstances it can be claimed by individuals that are in work but working less than 16 hours a week. There are 2 types of JSA: (1) 'Contribution-based Jobseeker's Allowance' which is paid at a standard rate if individuals have paid or been credited with enough class 1 National Insurance contributions; and (2) 'Income-based Jobseeker's Allowance' which is based on individuals' income and savings and is paid at a rate based on individual circumstances. A long-term claimant is defined as someone who has claimed JSA for more than 6 months.

### **Wards**

Wards refer to the 2003 Census Area Statistics (CAS) wards, rather than the 2005 CAS wards. This is because the 2003 wards have defined populations and working age populations. There is also a level of consistency in using these wards for continual comparison.

### **Working Age Population**

The total number of individuals within an area that are female aged 16-59 and male aged 16-64.

## SOURCES

### **Annual / Quarterly Change**

*Source:* Calculations by the Commission for the New Economy;

### **JCP Vacancies**

*Source:* Vacancies notified to JCP, DWP, 2009;

### **JSA Claimants**

*Source:* Claimant Count – Age and Duration, DWP, 2009 – this dataset excludes non-computerised clerical claims, which constitute approximately 1% of claimants;

### **JSA Claimant Rate**

*Source:* Claimant Count – Age and Duration, DWP, 2009; Resident-based Claimant Count Denominators, DWP, 2009; Calculations by the Commission for the New Economy;

### **Long-Term JSA Claimants**

*Source:* Claimant Count – Age and Duration, DWP, 2009;

### **Short-term JSA Claimants**

*Source:* Claimant Count – Age and Duration, DWP, 2009;

### **Working Age Population**

*Source:* Resident-based Claimant Count Denominators, DWP, 2009;

### **Youth JSA Claimants**

*Source:* Claimant Count – Age and Duration, DWP, 2009;