

unemployment **MONITOR**

GREATER MANCHESTER, DECEMBER 2009
USING NOVEMBER 2009 DATA

81,249

JOBSEEKER'S ALLOWANCE CLAIMANTS,
NOVEMBER 2009

**-1.0% MONTHLY
CHANGE**
**+50.8% ANNUAL
CHANGE**

22,134

JOBCENTRE PLUS REPORTED VACANCIES,
NOVEMBER 2009

**+20.0% MONTHLY
CHANGE**
**+0.7% ANNUAL
CHANGE**

IN THIS EDITION:

- **TOTAL JSA CLAIMANTS FALL FOR SECOND MONTH IN A ROW**
- **LONG-TERM JOBSEEKERS INCREASE DESPITE FALLS IN OVERALL CLAIMANT COUNT**
- **YOUTH CLAIMANTS FALL FASTER THAN THE NATIONAL AND REGIONAL RATE**
- **MORE CLAIMANTS MOVING INTO WORK, BUT MORE MOVING ON TO OTHER BENEFITS TOO**
- **JOB OPPORTUNITIES INCREASE IN THE CITY REGION**

CONTACT:

t: 0161 237 4024

e: christopher.pope@neweconomymanchester.com

w: <http://www.neweconomymanchester.com/>

twitter: mancmonitor

CONTENTS

Monitor Focus	3
Jobseeker’s Allowance Claimants	4
Rates	4
Gender	5
Long-term	7
Youth	8
Jobseeker’s Allowance Flows	9
Age and Duration	9
Flows by Occupation	10
Off-flows by Reason	11
Jobcentre Plus Vacancies	12
Total Vacancies	12
Occupation and Industry	13
Technical Note	14
Definitions	15
Sources	16

Monitor FOCUS

Claimant count falls, vacancies rise

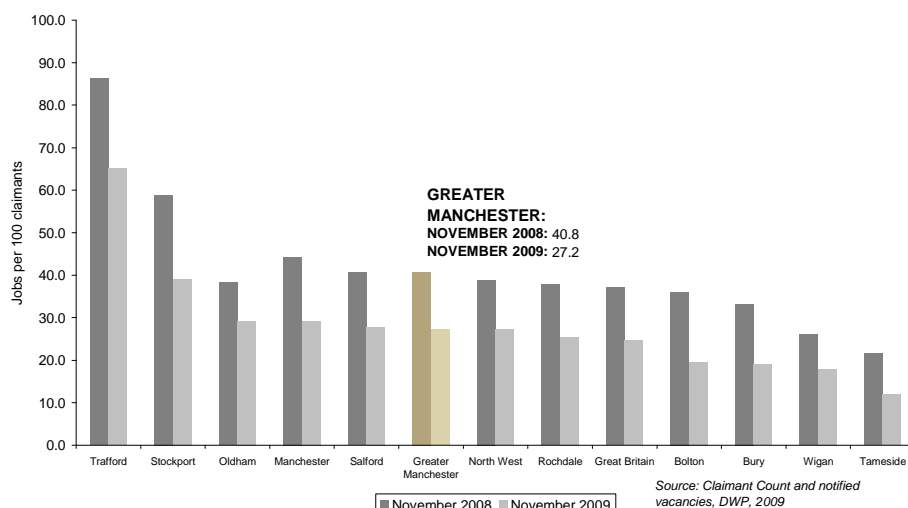
For the second month in a row, Greater Manchester has experienced a decrease in jobseeker's allowance claimants, complementing a decrease both regionally and nationally. The sub-region experienced a decrease of 1.0% to 81,249 claimants in November, whilst a fall of 0.8% was experienced both regionally and nationally. This is not an indication of an emergence from the recession, despite the past two months decrease in claimants across the UK. Indeed, recent figures have shown that, in contrast to some European countries, the UK has yet to work its way out of the recession.

In the three months to October 2009, New Economy estimate that total unemployment fell to around 119,400, with around one-third not claiming JSA. This was a quarterly decrease of nearly 2,100, or 1.7%, in comparison to a national quarterly increase of 0.8%.

Figure 1: Annual and Monthly Change in JSA and Vacancy Levels, November 2008 – November 2009 and October 2009 – November 2009

Area	Total JSA Claimants			Long-term (6 months +) JSA Claimants			Youth (16-24) JSA Claimants			JCP Reported Vacancies		
	Number	Annual Change	Monthly Change	Number	Annual Change	Monthly Change	Number	Annual Change	Monthly Change	Number	Annual Change	Monthly Change
Greater Manchester	81,249	27,365 (50.8%)	-811 (-1.0%)	28,695	16,675 (138.7%)	525 (1.9%)	27,320	9,420 (52.6%)	-640 (-2.3%)	22,134	149 (0.7%)	3,685 (20.0%)

Vacancies also rose this month, as companies continued to gear up for the Christmas period. This convergence between supply and demand for jobs has increased the ratio of jobs to claimants to 27 jobs for every 100 claimants in Greater Manchester. Last month, this ratio stood at 22 jobs per 100 claimants. The North West also experienced 27 jobs per 100 claimants, whilst Great Britain experienced a lower rate of just 25 jobs.



As can be seen from the graph (above) the number of jobs per 100 claimants has fallen significantly on the year, with the number of jobs per claimant falling from 41 jobs in November 2008 to 27 in November 2009 – a fall of 33.2%.

Changes in long-term unemployment

Long-term unemployment continued to increase this month across the districts, with only Bury (1.0%) showing a monthly decrease. Long-term unemployment has risen every month since November 2008, and the 28,695 long-term claimants in Greater Manchester is now more than double the 12,020 claimants in November 2008.

The proportion of long-term claimants is also rising. Up to March 2009, the proportion fell as new claimants began claiming JSA during the recession. However, as new claimants continued to stay on the register, the long-term proportion began to increase. As claimant numbers are currently falling, the proportion of long-term claimants is likely to increase.

The remainder of this document provides detailed analysis of jobseeker's allowance and vacancy data across Greater Manchester.

JOBSEEKER'S ALLOWANCE CLAIMANTS: TOTAL CLAIMANTS

Figure 1: JSA Claimant Count by rate, November 2008 – November 2009

District	Ward	JSA Claimants			
		Number	Monthly Change (%)	Annual Change (%)	Rate
		Nov 09	Oct09 - Nov09	Nov08 - Nov09	Nov 09
Rochdale	Central and Falinge	867	-0.5%	38.1%	13.7%
Stockport	Brinnington	744	4.1%	50.3%	12.2%
Salford	Langworthy	395	0.3%	29.9%	10.3%
Oldham	Coldhurst	708	-3.3%	51.3%	9.6%
Bolton	Central	650	1.7%	43.5%	9.5%
Salford	Broughton	464	4.0%	43.7%	9.1%
Manchester	Benchill	656	0.5%	43.2%	9.0%
Wigan	Norley	521	-3.7%	29.3%	9.0%
Manchester	Moss Side	887	3.4%	36.7%	8.8%
Manchester	Beswick and Clayton	595	-2.0%	41.0%	8.7%
Bolton		8,406	-0.8%	51.8%	5.3%
Bury		4,718	0.3%	57.2%	4.2%
Manchester		18,159	-0.6%	40.7%	5.7%
Oldham		6,896	-3.9%	48.5%	5.2%
Rochdale		7,450	-1.6%	59.5%	5.9%
Salford		7,847	1.0%	58.0%	5.6%
Stockport		6,483	-1.0%	57.5%	3.8%
Tameside		6,867	-1.0%	55.4%	5.1%
Trafford		4,714	-1.7%	55.1%	3.6%
Wigan		9,709	-1.2%	47.4%	5.1%
Greater Manchester		81,249	-1.0%	50.8%	5.0%
North West		195,741	-0.8%	42.2%	4.6%
United Kingdom		1,569,446	-0.8%	48.6%	4.1%

Source: Claimant Count, DWP, 2009

The number of JSA claimants in Greater Manchester fell by 811 (1.0%) to 81,249 in November 2009, a 5.0% claimant rate. Comparatively, the North West (4.6%) and UK (4.1%) experienced lower claimant rates.

The highest JSA claimant rate continued to be in Rochdale (5.9%), with Central and Falinge in Rochdale continuing to have the highest ward claimant rate (13.7%).

All local authorities experienced a monthly decrease in JSA claimants, with Oldham experiencing the greatest reduction (3.9%). The monthly reduction in Greater Manchester (1.0%) exceeded that of the North West and UK (both 0.8%).

As can be seen from figure 3, claimant rates are around twice as high as they were 2 years ago. However, in recent months the pace of claimant growth has slowed, and the past 2 months have shown claimant decreases.

Figure 2: JSA Claimant Rate by district, November 2009

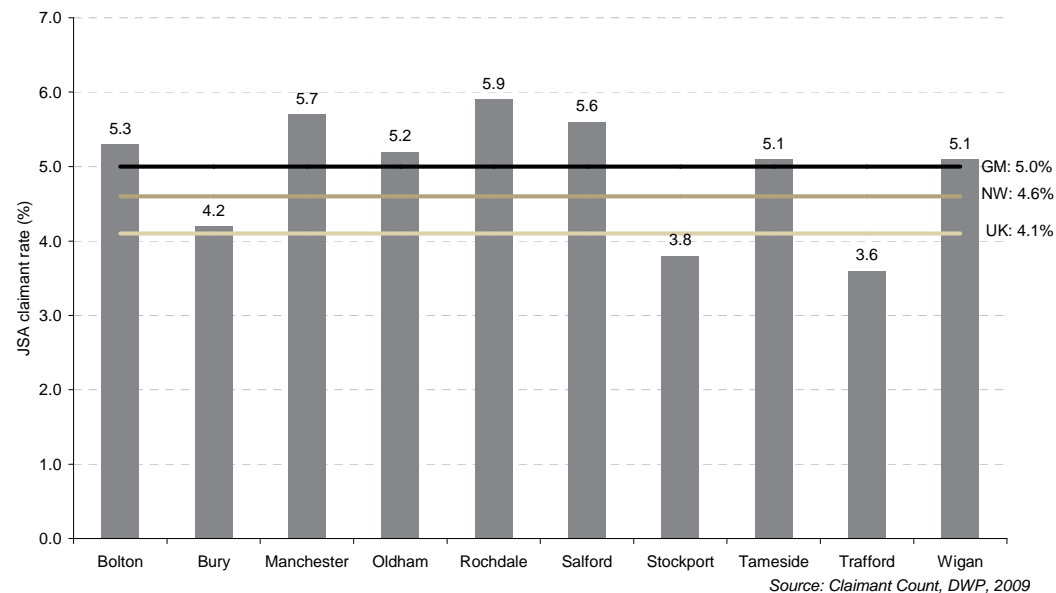
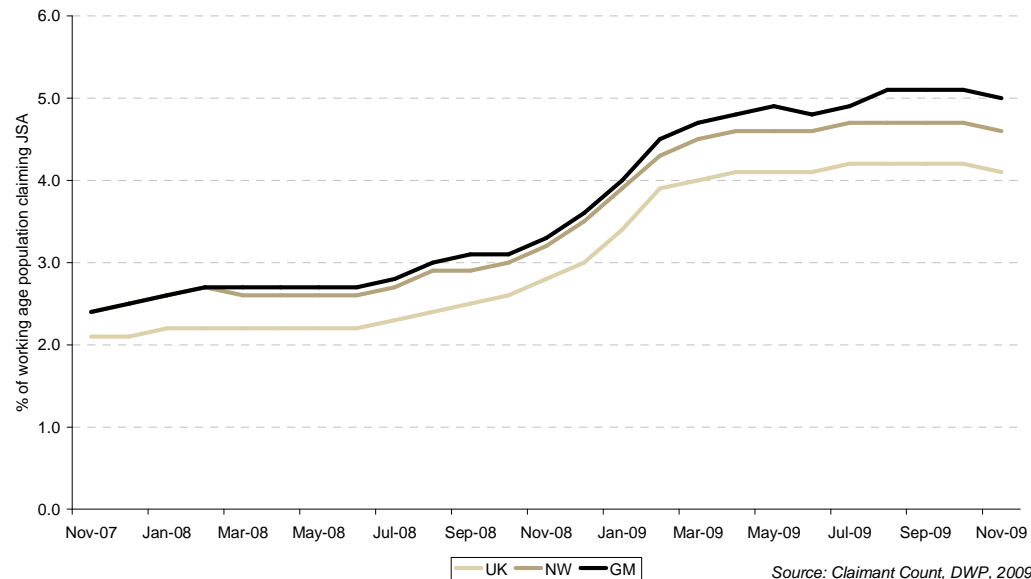


Figure 3: Historical JSA Claimant Rate November 2007 – November 2009



JOBSEEKER'S ALLOWANCE CLAIMANTS: CLAIMANTS BY GENDER

Figure 4: Male JSA Claimant Count by rate, November 2008 – November 2009

District	Ward	Male JSA Claimants			
		Number	Monthly Change (%)	Annual Change (%)	Rate
		Nov 09	Oct09 - Nov09	Nov08 - Nov09	Nov09
Rochdale	Central and Falinge	671	0.0%	33.9%	19.0%
Stockport	Brinnington	562	3.1%	48.3%	17.7%
Salford	Langworthy	306	-1.3%	27.0%	14.7%
Manchester	Benchill	493	3.6%	36.6%	14.5%
Oldham	Coldhurst	549	-1.8%	47.2%	14.0%
Bolton	Central	495	1.2%	37.5%	13.8%
Wigan	Norley	406	-2.9%	30.1%	13.7%
Manchester	Beswick and Clayton	466	-1.3%	35.5%	13.2%
Salford	Broughton	365	8.6%	43.7%	13.1%
Manchester	Moss Side	659	4.9%	33.4%	12.7%
Bolton		6,267	-0.4%	49.2%	7.5%
Bury		3,458	1.0%	52.9%	5.9%
Manchester		13,426	0.0%	35.5%	7.8%
Oldham		5,181	-4.4%	47.0%	7.5%
Rochdale		5,476	-1.1%	54.9%	8.2%
Salford		5,954	0.8%	54.2%	7.9%
Stockport		4,843	-0.2%	59.1%	5.4%
Tameside		5,164	-0.8%	55.2%	7.4%
Trafford		3,497	-0.4%	53.6%	5.1%
Wigan		7,318	-1.3%	45.4%	7.3%
Greater Manchester		60,584	-0.7%	47.9%	7.1%
North West		146,066	-0.3%	39.2%	6.6%
United Kingdom		1,143,015	-0.3%	46.0%	5.7%

Source: Claimant Count, DWP, 2009

The male JSA claimant count decreased by 407 (0.7%) to 60,584 in GM in November 2009 (a 7.1% claimant rate). This rate was higher than the North West (6.6%) or the UK (5.7%).

Across the local authorities, the highest male claimant rate was experienced in Rochdale (8.2%), partly due to the high rates in Central and Falinge (19.0%). However, Manchester had 3 wards within the top ten male claimant rates – Moss Side (12.7%), Beswick and Clayton (13.2%) and Benchill (14.5%) – whereas Rochdale only had one.

Bury (1.0%) and Salford (0.8%) saw monthly increases in the male claimant count, whilst Manchester experienced a decrease of only 4 claimants (0.0% change). Oldham, by comparison, experienced the greatest monthly decrease (4.4%).

Figure 5: Female JSA Claimant Count by rate, November 2008 – November 2009

District	Ward	Female JSA Claimants			
		Number	Monthly Change (%)	Annual Change (%)	Rate
		Nov 09	Oct09 - Nov09	Nov08 - Nov09	Nov 09
Rochdale	Central and Falinge	196	-2.0%	54.3%	7.0%
Stockport	Brinnington	182	7.1%	56.9%	6.2%
Oldham	St. Marys	176	-1.7%	61.5%	5.3%
Salford	Langworthy	89	6.0%	41.3%	5.0%
Rochdale	Newbold	165	5.1%	71.9%	4.9%
Bolton	Central	155	3.3%	66.7%	4.8%
Manchester	Moss Side	228	-0.9%	47.1%	4.7%
Oldham	Coldhurst	159	-8.1%	67.4%	4.6%
Manchester	Gorton South	188	11.2%	49.2%	4.5%
Manchester	Harpurhey	161	7.3%	114.7%	4.5%
Bolton		2,139	-1.8%	60.2%	2.8%
Bury		1,260	-1.6%	70.5%	2.4%
Manchester		4,733	-2.2%	58.0%	3.2%
Oldham		1,715	-2.4%	53.0%	2.7%
Rochdale		1,974	-2.9%	73.8%	3.3%
Salford		1,893	1.7%	71.2%	2.9%
Stockport		1,640	-3.1%	52.8%	2.0%
Tameside		1,703	-1.8%	56.1%	2.6%
Trafford		1,217	-5.1%	59.5%	2.0%
Wigan		2,391	-0.8%	54.2%	2.7%
Greater Manchester		20,665	-1.9%	60.1%	2.7%
North West		49,675	-2.2%	51.9%	2.5%
United Kingdom		426,431	-2.3%	56.1%	2.4%

Source: Claimant Count, DWP, 2009

The female JSA claimant count decreased by 404 (1.9%) to 20,655 in GM in November 2009 (a 2.7% claimant rate). This rate was higher than the North West (2.5%) or the UK (2.4%), but closer to the national average by comparison to the male claimant rate.

Across the local authorities, the highest female claimant rate was experienced in Rochdale (3.3%), partly due to the high rates in Central and Falinge ward (7.0%) and Newbold (4.9%). Rochdale has seen the greatest annual increase in female claimants of the districts – a 73.8% rise from 1,136 claimants in November 2008.

Only Salford (1.7%) experienced a monthly increase in the female claimant count, whilst Trafford experienced the greatest decrease of 5.1% to 1,217 female claimants.

JOBSEEKER'S ALLOWANCE CLAIMANTS: CLAIMANTS BY GENDER

The male and female claimant rates differ significantly across all areas. Within GM, Trafford regularly achieves the lowest male and female claimant rates – 5.1% and 2.0% respectively in November 2009 – whilst Rochdale experienced the greatest claimant rates this month – 8.2% for males and 3.3% for females.

This has not always been the case. Since January 2009, the total JSA claimant rate in Rochdale has exceeded that of Manchester, which had always previously had the highest claimant rate. The female claimant rate was equivalent in the two districts in December 2008, and higher in Rochdale since then.

The differential between male and female claimant rates was significant in each district. The greatest differential was experienced in Salford, with a 5.0 percentage point difference between the male and female claimant rates – a significant divergence. In Salford, the female claimant level is less than a third of the male claimant level (31.8%).

As can be seen from figures 7 and 8, female claimant rates have shifted differently to male rates: whereas the male claimant rate began to level off in April 2009 and peaked at 7.2% in September 2009, female rates continued growing and peaked earlier in August.

Figure 6: Male and Female JSA Claimant rate by District, November 2009

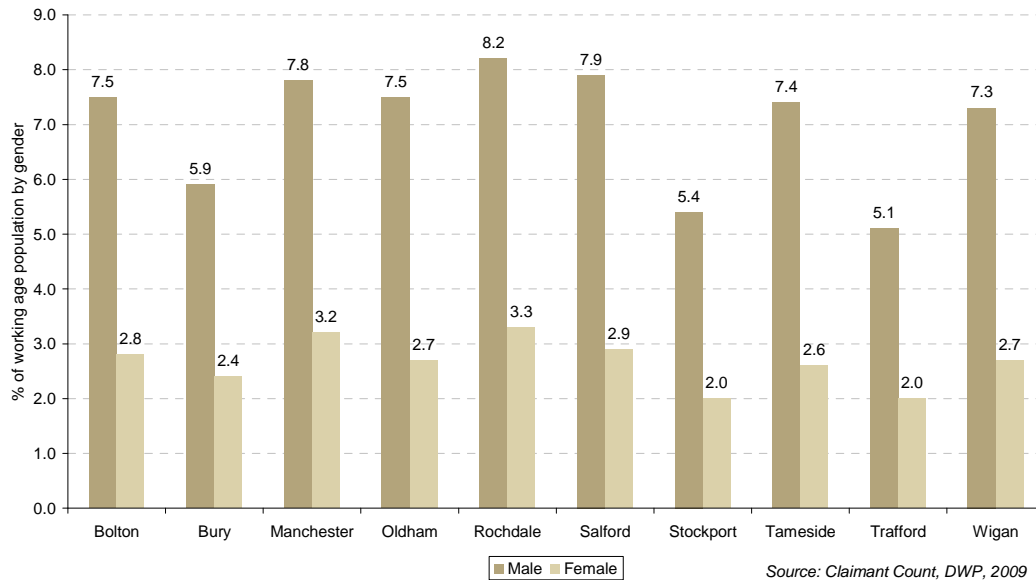


Figure 7: Historical Male JSA Claimant Rate, November 2007 – November 2009

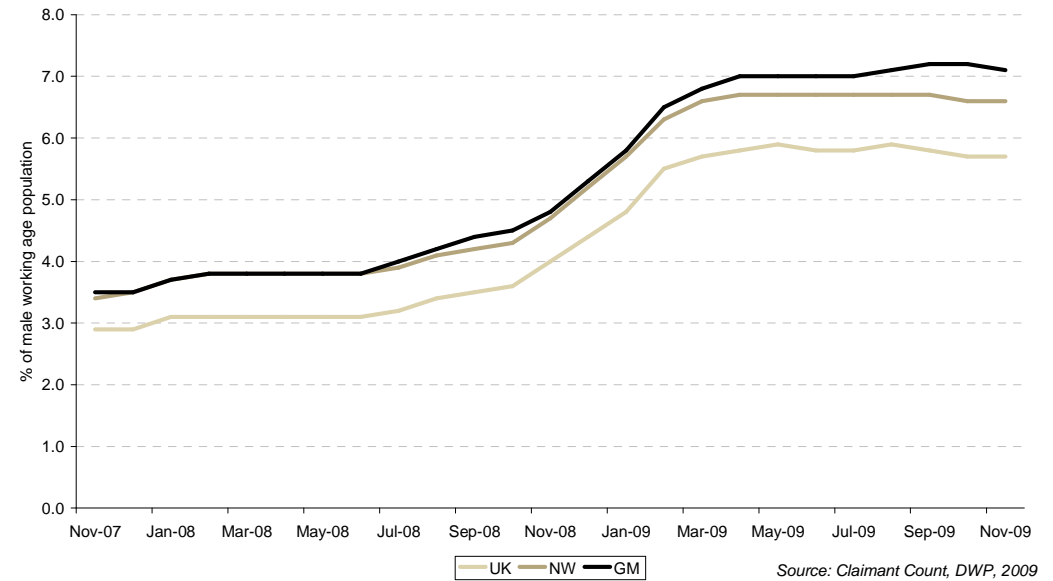
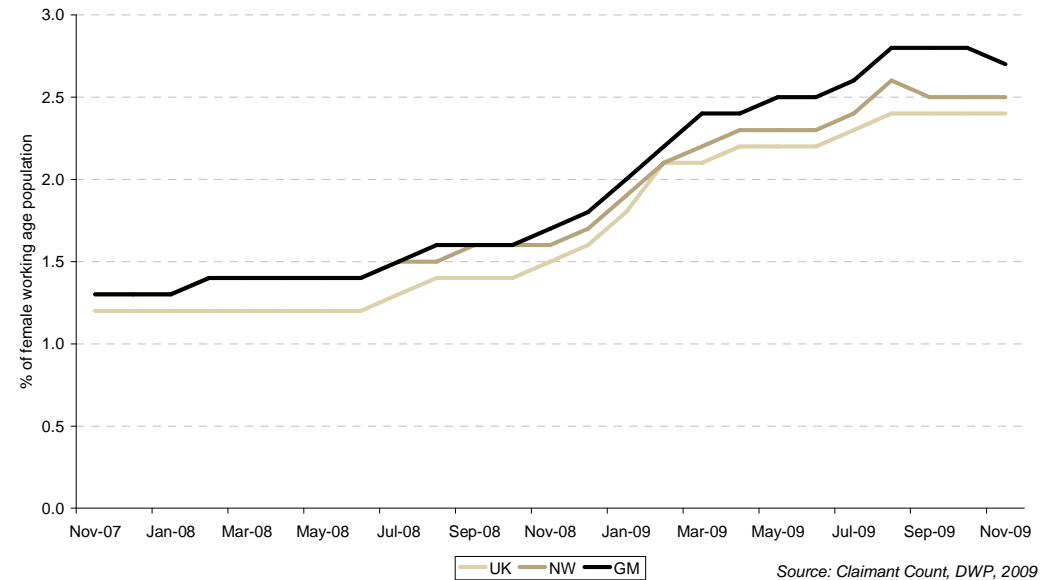


Figure 8: Historical Female JSA Claimant Rate, November 2007 – November 2009



JOBSEEKER'S ALLOWANCE CLAIMANTS: LONG-TERM CLAIMANTS

Figure 9: Long-term JSA claimants (over 6 months) by proportion of total JSA claimants, November 2008 – November 2009

District	Ward	Long-term JSA Claimants			
		Number	Monthly Change (%)	Annual Change (%)	% of total JSA
Rochdale	Balderstone	245	4.3%	157.9%	51.4%
Wigan	Newtown	255	10.9%	131.8%	48.5%
Wigan	Norley	250	-2.0%	150.0%	48.0%
Rochdale	Central and Falinge	400	1.3%	81.8%	46.1%
Rochdale	Castleton	165	10.0%	230.0%	44.4%
Stockport	Brinnington	330	3.1%	112.9%	44.4%
Wigan	Atherton	230	9.5%	187.5%	44.3%
Rochdale	Spotland	120	-4.0%	118.2%	44.3%
Stockport	Cale Green	200	2.6%	185.7%	44.2%
Stockport	South Reddish	240	6.7%	166.7%	44.0%
Bolton		3,070	2.3%	140.8%	36.5%
Bury		1,495	-1.0%	169.4%	31.7%
Manchester		6,260	3.0%	101.0%	34.5%
Oldham		2,465	0.0%	133.6%	35.7%
Rochdale		2,960	0.3%	157.4%	39.7%
Salford		2,545	3.2%	136.7%	32.4%
Stockport		2,455	3.6%	166.8%	37.9%
Tameside		2,415	2.5%	174.4%	35.2%
Trafford		1,320	2.3%	161.4%	28.0%
Wigan		3,705	0.7%	147.8%	38.2%
Greater Manchester		28,695	1.9%	138.7%	35.3%
North West		67,125	-0.3%	106.6%	34.3%
United Kingdom		535,815	0.1%	115.3%	34.1%

Source: Claimant Count, DWP, 2009

The long-term (over 6 months) JSA claimant count stood at 28,695 in GM in November 2009 (35.3% of the total JSA claimant level). This was higher than the North West (34.3%) and UK (34.1%) proportions. Rochdale had the highest proportion of long-term claimants (39.7%), with four of its wards – Balderstone, Central and Falinge, Castleton and Spotland – within the top ten highest proportions. Over half of Balderstone's JSA claimants (51.4%) had been claiming for more than 6 months.

As figure 11 shows, the on-flow of new claimants during the early part of the recession reduced the proportion of long-term claimants, but as these individuals continued to claim, the proportion began to increase.

Figure 10: Long-term JSA claimants as a proportion of total JSA claimants by district, November 2009

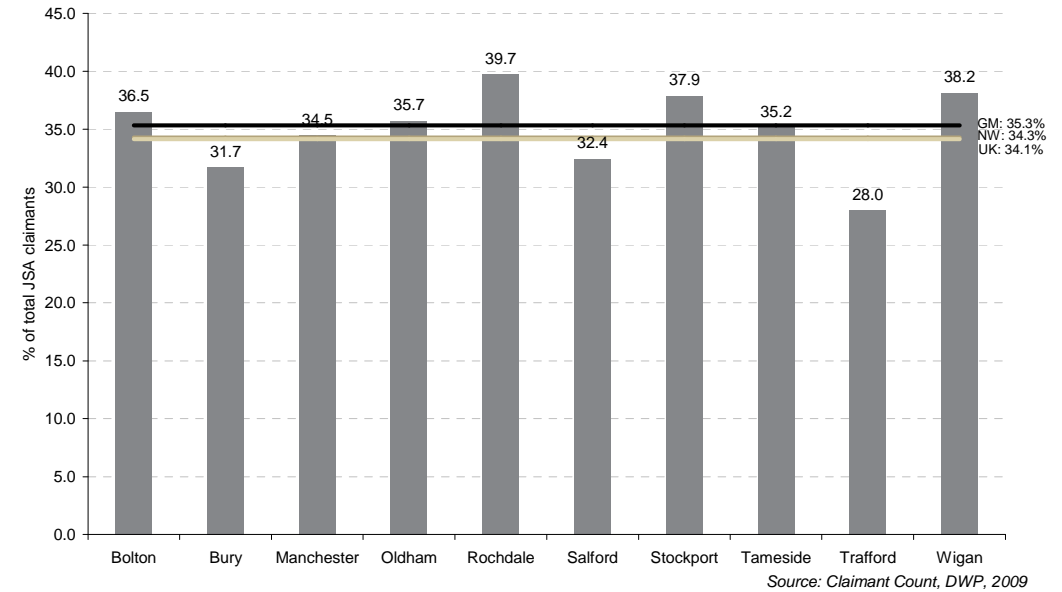
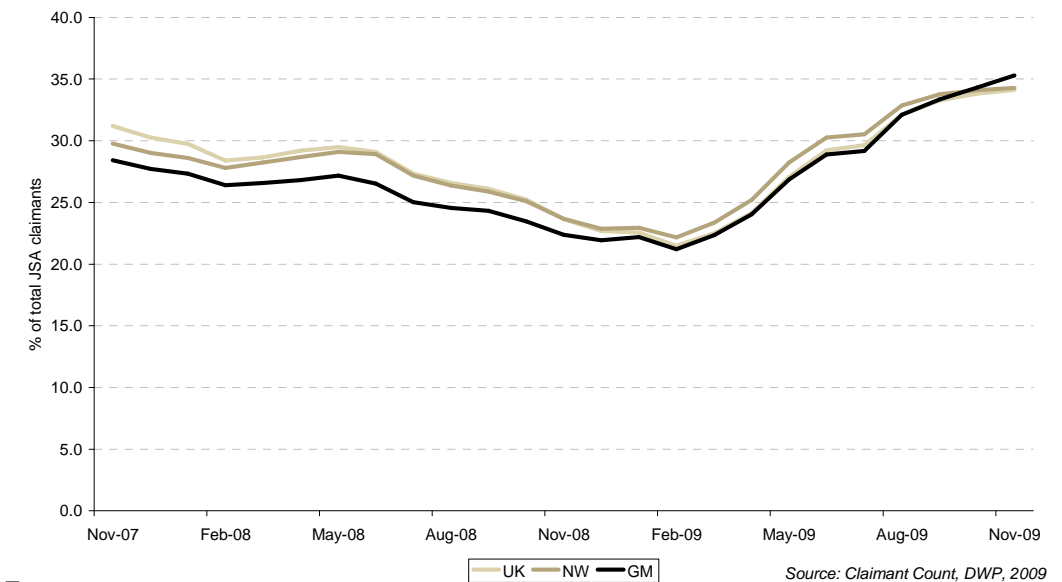


Figure 11: Historical Long-term JSA claimants as a proportion of total JSA claimants, November 2007 – November 2009



JOBSEEKER'S ALLOWANCE CLAIMANTS: YOUTH CLAIMANTS

Figure 12: Youth JSA claimants (16 to 24 years old) by proportion of total JSA claimants, November 2008 – November 2009

District	Ward	Youth JSA Claimants			
		Number	Monthly Change (%)	Annual Change (%)	% of total JSA
Manchester	Withington	165	-2.9%	65.0%	43.5%
Bury	Radcliffe South	175	16.7%	94.4%	42.4%
Wigan	Norley	215	-6.5%	26.5%	41.3%
Salford	Little Hulton	220	4.8%	63.0%	40.8%
Manchester	Old Moat	215	7.5%	26.5%	40.5%
Manchester	Woodhouse Park	225	4.7%	40.6%	40.0%
Manchester	Moston	170	-5.6%	47.8%	39.8%
Bolton	Farnworth	255	0.0%	82.1%	39.8%
Rochdale	Healey	145	-3.3%	61.1%	39.6%
Tameside	Longdendale	115	4.5%	130.0%	39.1%
Bolton		2,730	-2.5%	54.2%	32.5%
Bury		1,660	-1.5%	55.1%	35.2%
Manchester		6,140	-1.0%	44.8%	33.8%
Oldham		2,360	-6.9%	49.4%	34.2%
Rochdale		2,635	-3.1%	62.7%	35.4%
Salford		2,595	0.8%	55.9%	33.1%
Stockport		2,035	-2.9%	67.5%	31.4%
Tameside		2,390	-0.8%	57.8%	34.8%
Trafford		1,370	-5.2%	54.8%	29.1%
Wigan		3,400	-2.7%	45.6%	35.0%
Greater Manchester		27,320	-2.3%	52.6%	33.6%
North West		62,650	-2.5%	36.7%	32.0%
United Kingdom		472,965	-2.6%	43.8%	30.1%

Source: Claimant Count, DWP, 2009

The youth (aged 16-24) JSA claimant count stood at 27,320 in GM in November 2009 (33.6% of the total JSA claimant level). This was higher than the North West (32.0%) and UK (30.1%) proportions. Rochdale experienced the highest proportion of youth claimants (35.4%), yet four Manchester wards are within the top ten highest proportions, compared to just one – Healey (39.6%) – in Rochdale.

As figure 11 shows, the proportion of youth claimants shows a continuing pattern that follows the academic year. Though youth claimant proportion is falling, the current pattern suggests that it may be expected to increase again in January 2010.

Figure 13: JSA Youth claimants as a proportion of total JSA claimants by district, November 2009

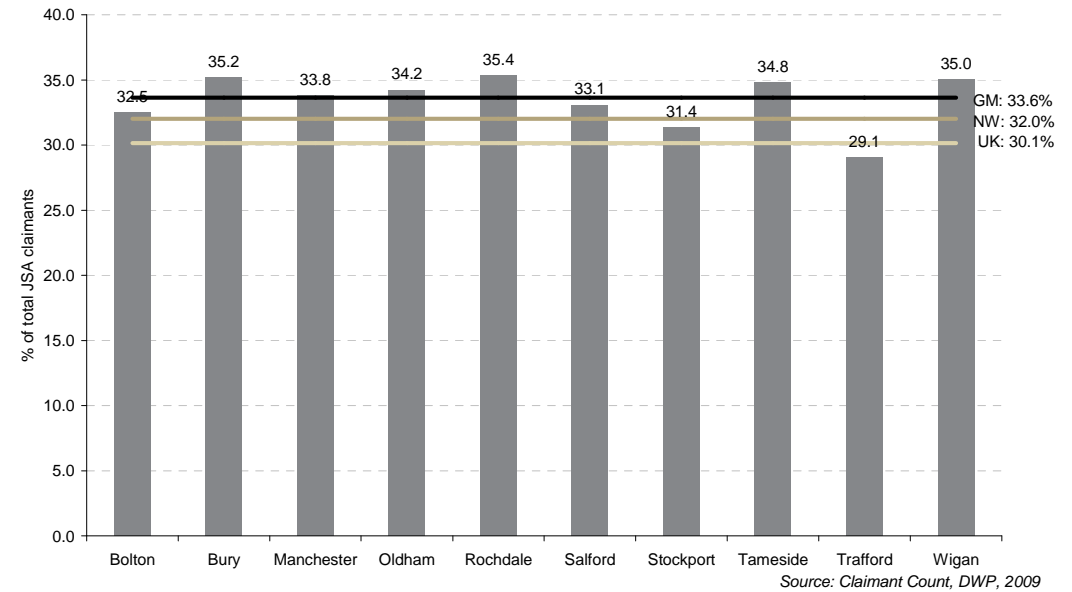
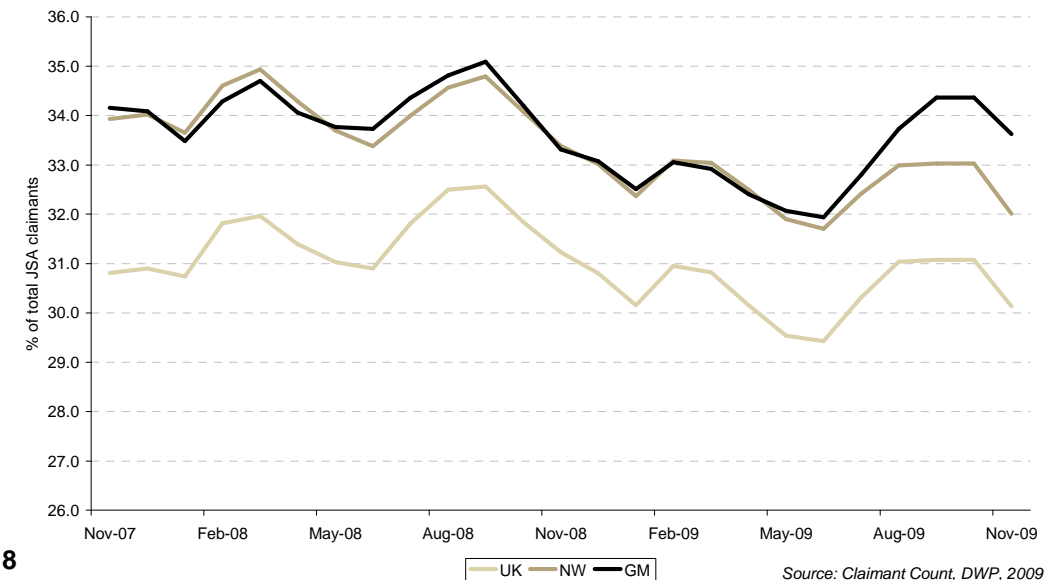


Figure 14: Historical JSA Youth claimants as a proportion of total JSA claimants, November 2007 – November 2009



JOBSEEKER'S ALLOWANCE FLOWS: TOTAL CLAIMANT FLOWS

Figure 15: JSA claimant flows by age and duration, November 2009

Age	Off-Flow Duration of Claim					Total On-Flows	Net Flows
	1 to 26 weeks	26 to 52 weeks	52 to 104 weeks	104 weeks and above	Total		
Under 17	5	0	0	0	10	20	10
17	150	5	0	0	155	170	15
18	1,030	95	0	0	1,125	1,270	145
19	1,000	215	20	0	1,235	1,165	-70
20-24	4,330	780	85	5	5,195	4,750	-445
25-29	2,305	475	160	5	2,950	2,805	-145
30-34	1,370	355	130	0	1,850	1,840	-10
35-39	1,210	345	130	5	1,695	1,660	-35
40-44	1,130	315	115	5	1,570	1,625	55
45-49	1,035	260	85	5	1,390	1,410	20
50-54	795	205	75	5	1,085	1,140	55
55-59	655	200	85	10	945	840	-105
Over 60	225	55	5	0	285	235	-50
Total	15,260	3,300	880	50	19,490	18,930	-560

Source: Claimant Count Flows, DWP, 2009. Note: Columns may not sum due to rounding

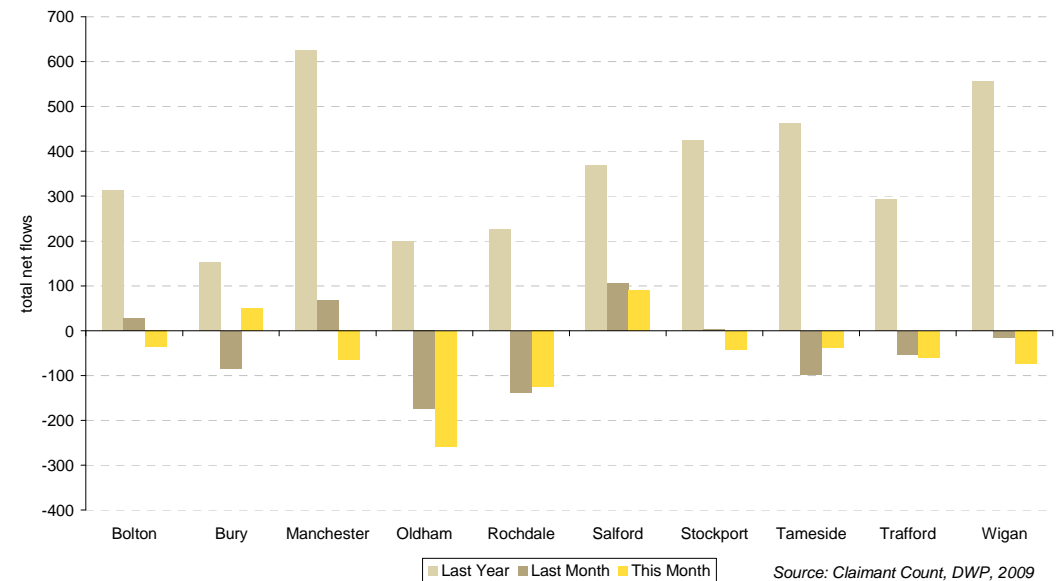
The total net flow of JSA claimants in GM was an off-flow of 560, compared to last month's net off-flow of 355. The greatest number of net off-flows occurred in the 20-24 year old age bracket (445 net off-flows). Comparatively, the 18 year age group saw net on-flows of 145.

The majority of off-flows from JSA in GM (78.3%) occurred within the first 6 months of claiming. This proportion has seen a slight decrease from the October level of 78.7%.

Figures 17 and 18 highlight how the on-flows and off-flows have altered over the course of the last two years. Almost all districts (Salford being the sole exception) have experienced net off-flows in the number of claimants in either November or October. In addition, the divergence between on-flows and off-flows has significantly reduced. At its greatest point during the recession there was a net on-flow of 8,325 claimants. However, though on-flows continue to show an upward trajectory, off-flows are currently greater than on-flows as more claimants leave the claimant register than join.

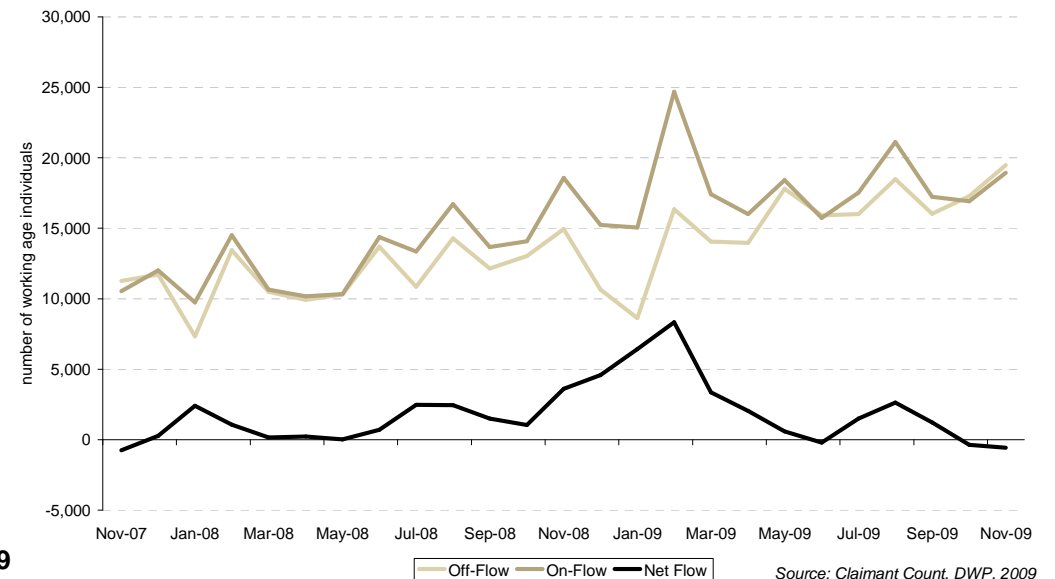
On-flows have mainly come through elementary trades (3,880 on-flows) and sales occupations (2,715), and leave mainly into similar occupations.

Figure 16: Net flows of JSA claimants by district, November 2008 – November 2009



Source: Claimant Count, DWP, 2009

Figure 17: On-flows, off-flows and net flows of JSA claimants in Greater Manchester, November 2007 – November 2009



Source: Claimant Count, DWP, 2009

Figure 18: On-flows of JSA claimants by usual occupation, November 2008 – November 2009

Occupation	On-Flow			
	Number	Monthly Change (%)	Annual Change (%)	Percentage of total
	Nov09	Oct09- Nov09	Nov08 - Nov09	Nov 09
00 : Occupation unknown	145	-19.4%	93.3%	0.8%
11 : Corporate Managers	695	1.5%	-0.7%	3.7%
12 : Managers and Proprietors in Agriculture	165	43.5%	3.1%	0.9%
21 : Science and Technology Prof.	300	3.4%	20.0%	1.6%
22 : Health Prof.	10	-50.0%	100.0%	0.1%
23 : Teaching and Research Prof.	205	7.9%	57.7%	1.1%
24 : Business and Public Service Prof.	215	-8.5%	13.2%	1.1%
31 : Science and Technology Assoc. Prof.	250	-5.7%	11.1%	1.3%
32 : Health and Social Welfare Assoc. Prof.	140	-15.2%	27.3%	0.7%
33 : Protective Service Occ.	30	20.0%	50.0%	0.2%
34 : Culture, Media and Sports Occ.	385	2.7%	32.8%	2.0%
35 : Business and Public Service Assoc Prof.	395	11.3%	3.9%	2.1%
41 : Administrative Occ.	1,685	8.7%	8.7%	8.9%
42 : Secretarial and Related Occ.	225	0.0%	-16.7%	1.2%
51 : Skilled Agricultural Trades	195	50.0%	0.0%	1.0%
52 : Skilled Metal and Electronic Trades	765	28.6%	27.5%	4.0%
53 : Skilled Construction and Building Trades	1,180	14.6%	-8.9%	6.2%
54 : Textiles, Printing, Other Skilled Trades	260	20.9%	-14.8%	1.4%
61 : Caring Personal Service Occ.	820	18.8%	51.9%	4.3%
62 : Leisure and Other Personal Service Occ.	305	29.8%	24.5%	1.6%
71 : Sales Occ.	2,715	10.8%	20.1%	14.3%
72 : Customer Service Occ.	590	22.9%	-0.8%	3.1%
81 : Process, Plant and Machine Operatives	720	26.3%	-12.7%	3.8%
82 : Transport and Mobile Machine Drivers and Operatives	1,085	10.7%	-15.9%	5.7%
91 : Elementary Trades, Plant and Storage Related Occ.	3,880	11.8%	-15.8%	20.5%
92 : Elementary Administration and Service Occ.	1,570	11.0%	7.5%	8.3%
TOTAL	18,930	11.9%	1.9%	100.0%

Source: Claimant Count Flows, DWP, 2009

JOBSEEKER'S ALLOWANCE FLOWS: OCCUPATION

Figure 19: Off-flows of JSA claimants into employment by sought occupation, November 2008 – November 2009

Occupation	Off-Flow into Employment			
	Number	Monthly Change (%)	Annual Change (%)	Percentage of total
	Nov 09	Oct09 - Nov09	Nov08 - Nov09	Nov 09
00 : Occupation unknown	0	-	-	0.0%
11 : Corporate Managers	460	24.3%	84.0%	5.5%
12 : Managers and Proprietors in Agriculture	85	54.5%	70.0%	1.0%
21 : Science and Technology Prof.	160	14.3%	113.3%	1.9%
22 : Health Prof.	15	200.0%	200.0%	0.2%
23 : Teaching and Research Prof.	150	-9.1%	76.5%	1.8%
24 : Business and Public Service Prof.	140	33.3%	115.4%	1.7%
31 : Science and Technology Assoc. Prof.	140	33.3%	64.7%	1.7%
32 : Health and Social Welfare Assoc. Prof.	70	16.7%	0.0%	0.8%
33 : Protective Service Occ.	10	0.0%	0.0%	0.1%
34 : Culture, Media and Sports Occ.	235	34.3%	88.0%	2.8%
35 : Business and Public Service Assoc Prof.	260	23.8%	62.5%	3.1%
41 : Administrative Occ.	875	16.7%	36.7%	10.5%
42 : Secretarial and Related Occ.	140	33.3%	64.7%	1.7%
51 : Skilled Agricultural Trades	30	20.0%	-14.3%	0.4%
52 : Skilled Metal and Electronic Trades	340	28.3%	100.0%	4.1%
53 : Skilled Construction and Building Trades	500	17.6%	75.4%	6.0%
54 : Textiles, Printing, Other Skilled Trades	130	36.8%	23.8%	1.6%
61 : Caring Personal Service Occ.	320	16.4%	64.1%	3.8%
62 : Leisure and Other Personal Service Occ.	100	33.3%	5.3%	1.2%
71 : Sales Occ.	1,030	44.1%	51.5%	12.4%
72 : Customer Service Occ.	305	29.8%	38.6%	3.7%
81 : Process, Plant and Machine Operatives	335	21.8%	67.5%	4.0%
82 : Transport and Mobile Machine Drivers and Operatives	535	16.3%	52.9%	6.4%
91 : Elementary Trades, Plant and Storage Related Occ.	1,410	24.2%	19.0%	16.9%
92 : Elementary Administration and Service Occ.	530	30.9%	47.2%	6.4%
TOTAL	8,320	25.3%	48.8%	100.0%

Source: Claimant Count Flows, DWP, 2009

JOBSEEKER'S ALLOWANCE FLOWS: REASONS FOR OFF-FLOWS

Figure 20: Reason for off-flows from the JSA claimant count, November 2008 – November 2009

Reason for off-flow	JSA Claimant Off-Flows			
	Number	Monthly Change (%)	Annual Change (%)	Percent of total
	Nov 09	Oct09 - Nov09	Nov08-Nov09	Nov 09
Found work or increased work to more than 16 hours a week	8,320	25.3%	48.8%	42.7%
Claimed benefit other than JSA	610	41.9%	-24.7%	3.1%
Claimed Income Support	225	45.2%	4.7%	1.2%
Claimed Incapacity Benefit	145	31.8%	-59.7%	0.7%
Claimed another benefit	230	43.8%	0.0%	1.2%
Government supported training	165	26.9%	-86.5%	0.8%
Education or approved training	185	-81.3%	60.9%	0.9%
Gone abroad	715	-19.2%	47.4%	3.7%
Ceased claiming	295	7.3%	51.3%	1.5%
Failed to sign	6,520	14.9%	35.8%	33.5%
Other reasons	660	28.2%	85.9%	3.4%
Retirement age reached	20	33.3%	-33.3%	0.1%
Not known	2,015	16.1%	46.0%	10.3%
All reasons	19,490	12.8%	30.4%	100.0%

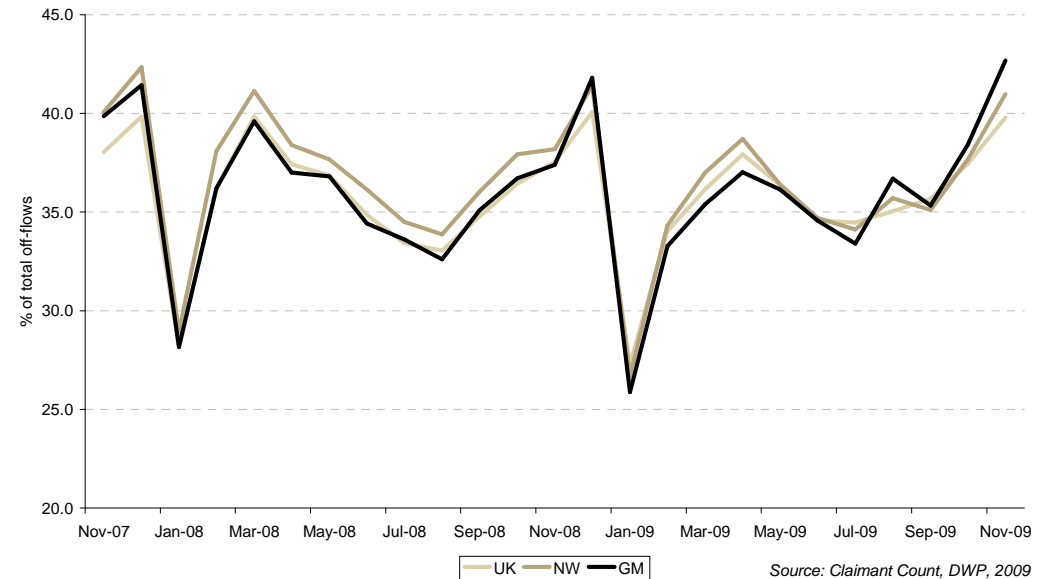
Source: Claimant Count Flows, DWP, 2009

The main reason for an off-flow from the JSA register was because the claimant found work or increased work to more than 16 hours a week (8,320 off-flows). This accounted for 42.7% of the total number of claimants moving off the register. Annually, there was an increase of 48.8% in the number of claimants moving into employment.

Across GM, 610 claimants moved from JSA to another benefit in November 2009. Most of these claimant off-flows were to a benefit other than IB/ESA or IS (230). 225 claimants flowed onto income support, an annual increase of 4.7%. The number of claimants off-flows to incapacity benefit decreased by 59.7% annually. As can be seen in figure 22, the proportion of off-flows moving to another benefit has more than halved in 2 years.

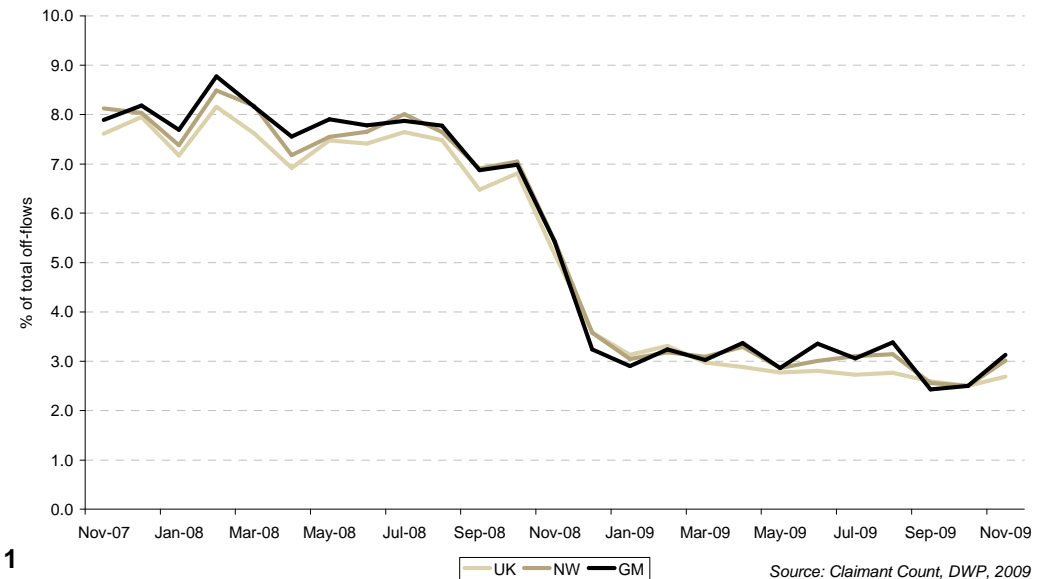
Only 0.8% of off-flows (165 off-flows) moved into government supported training in November, and a further 185 (0.9%) moved into education or approved training. A third of claimant off-flows (33.5%) were due to claimants failing to sign on, indicating these claimants may yet claim again.

Figure 21: Proportion of off-flows moving into employment, November 2007 – November 2009



Source: Claimant Count, DWP, 2009

Figure 22: Proportion of off-flows moving onto another benefit, November 2007 – November 2009



Source: Claimant Count, DWP, 2009

JOBCENTRE PLUS NOTIFIED VACANCIES: TOTAL VACANCIES

Figure 23: JCP notified vacancies by number, November 2008 – November 2009

District	Ward	JCP Notified Vacancies			
		Number	Monthly Change (%)	Annual Change (%)	Vacancy Ratio to JSA Claimants
		Nov 09	Oct09 - Nov09	Nov08 - Nov09	Nov 09
Manchester	Central	2,341	-13.7%	-13.2%	3.26
Rochdale	Middleton North	836	144.4%	76.4%	2.30
Trafford	Davyhulme East	780	20.4%	56.6%	5.20
Stockport	Bredbury	678	63.8%	51.7%	2.09
Trafford	Broadheath	664	94.2%	88.1%	3.00
Oldham	Shaw	615	299.4%	-36.2%	2.65
Trafford	Altrincham	490	-17.1%	80.8%	2.12
Salford	Ordsall	476	73.7%	-4.8%	1.24
Salford	Blackfriars	473	115.0%	79.8%	0.97
Bolton	Blackrod	447	55.2%	12.9%	1.65
Bolton		1,644	18.6%	-17.4%	0.20
Bury		899	20.3%	-9.7%	0.19
Manchester		5,311	5.2%	-7.1%	0.29
Oldham		2,017	64.4%	13.6%	0.29
Rochdale		1,896	62.6%	7.5%	0.25
Salford		2,189	46.5%	8.4%	0.28
Stockport		2,539	15.1%	4.7%	0.39
Tameside		825	5.9%	-13.4%	0.12
Trafford		3,067	16.3%	16.9%	0.65
Wigan		1,747	-0.6%	1.6%	0.18
Greater Manchester		22,134	20.0%	0.7%	0.27
North West		53,282	7.1%	-0.4%	0.27
Great Britain		374,380	7.6%	-1.4%	0.25

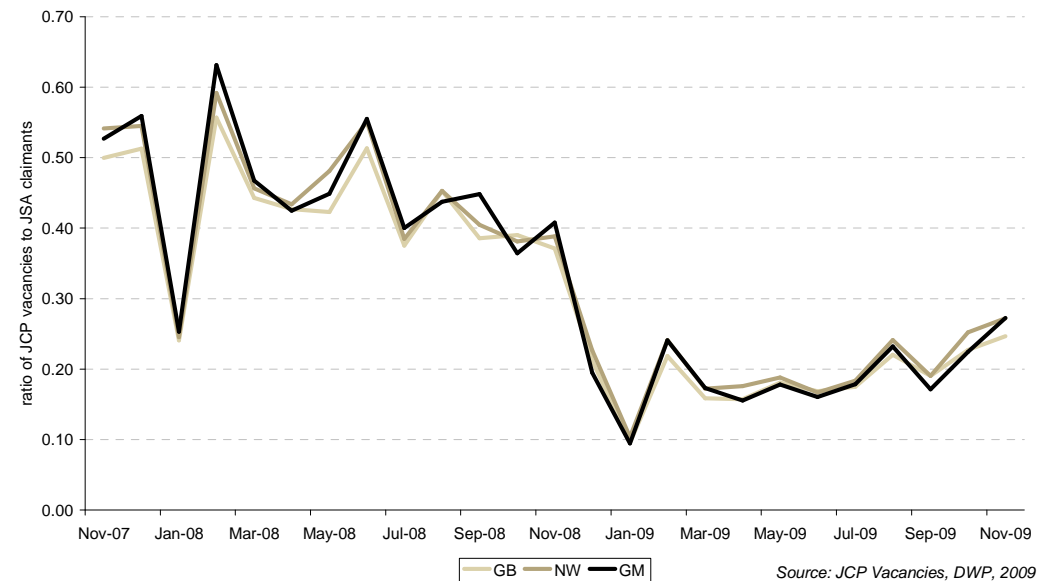
Source: JCP Vacancies, DWP, 2009

The total number of vacancies in GM stood at 22,134 in November 2009 – a 20.0% monthly increase in notified vacancies. This was a greater increase than the North West (7.1%) and Great Britain (7.6%).

The City of Manchester experienced the highest number of vacancies (5,311), yet experienced one of the smallest monthly increase (5.2%)%. Wigan (0.6%) experienced the only monthly decrease in claimants.

Some districts have begun to show annual increases in vacancies – in particular, Trafford has experienced a 16.9% increase. In contrast, Bolton has experienced the greatest annual decrease of 17.4%.

Figure 24: Ratio of JCP notified vacancies to JSA claimants by area, November 2007 – November 2009



Source: JCP Vacancies, DWP, 2009

Within GM, the ratio of vacancies to JSA claimants was highest in Trafford (0.65), with low numbers of claimants and the second largest number of vacancies in the city region. Comparatively, Tameside, with a low number of notified vacancies and a relatively higher number of claimants, experienced the lowest ratio of 0.12 – the equivalent of around 12 job vacancies for every 100 claimants.

As can be seen from figures 25 and 26, sales occupations experienced the greatest numbers of vacancies in the last month (5,029 vacancies). This was followed by vacancies for elementary administration and service occupations (2,812 vacancies). This is likely due to more businesses gearing up for Christmas spending patterns amongst consumers. However, these occupations were not where the majority of new claimants came from - e.g. elementary trades – or where claimants obtained jobs (see figure 18 and 19 above).

The majority of vacancies were within the real estate, renting and business activities sector (13,644 vacancies, or 61.6% of total vacancies). This is a increase of 42.5% (4,066 vacancies) on the 9,578 vacancies in October. Transport, storage and communication vacancies saw the greatest monthly increase of 35.2% to 759 vacancies.

JOBCENTRE PLUS NOTIFIED VACANCIES: OCCUPATION AND INDUSTRY

Figure 25: Vacancies by occupation, November 2008 – November 2009

Occupation	JCP Notified Vacancies			
	Number	Monthly Change (%)	Annual Change (%)	Percentage of total
	Nov09	Oct09 – Nov 09	Nov08 - Nov09	Nov09
11 : Corporate Managers	574	24.5%	-1.2%	2.6%
12 : Managers and Proprietors in Agriculture and Services	146	37.7%	-34.2%	0.7%
21 : Science and Technology Professionals	112	-13.8%	-40.4%	0.5%
22 : Health Professionals	20	-20.0%	150.0%	0.1%
23 : Teaching and Research Professionals	306	5.5%	86.6%	1.4%
24 : Business and Public Service Professionals	209	34.0%	59.5%	0.9%
31 : Science and Technology Associate Professionals	104	1.0%	2.0%	0.5%
32 : Health and Social Welfare Associate Professionals	478	-17.2%	50.3%	2.2%
33 : Protective Service Occupations	10	100.0%	42.9%	0.0%
34 : Culture, Media and Sports Occupations	169	16.6%	69.0%	0.8%
35 : Business and Public Service Associate Professionals	1,852	41.4%	56.9%	8.4%
41 : Administrative Occupations	1,877	33.6%	6.2%	8.5%
42 : Secretarial and Related Occupations	329	20.1%	-5.7%	1.5%
51 : Skilled Agricultural Trades	12	-29.4%	20.0%	0.1%
52 : Skilled Metal and Electronic Trades	317	-18.3%	-26.8%	1.4%
53 : Skilled Construction and Building Trades	393	0.5%	-38.0%	1.8%
54 : Textiles, Printing and Other Skilled Trades	430	57.5%	13.8%	1.9%
61 : Caring Personal Service Occupations	1,383	-8.8%	-54.1%	6.2%
62 : Leisure and Other Personal Service Occupations	232	7.9%	5.5%	1.0%
71 : Sales Occupations	5,029	20.5%	23.9%	22.7%
72 : Customer Service Occupations	1,340	25.5%	-13.9%	6.1%
81 : Process, Plant and Machine Operatives	644	43.8%	25.8%	2.9%
82 : Transport and Mobile Machine Drivers and Operatives	1,300	21.8%	17.8%	5.9%
91 : Elementary Trades, Plant and Storage Related Occupations	2,056	48.3%	-2.4%	9.3%
92 : Elementary Administration and Service Occupations	2,812	11.6%	-1.0%	12.7%

Source: JCP Vacancies data, 2009

Figure 26: Vacancies in Manchester by industry, November 2008 – November 2009

Industry	JCP Notified Vacancies			
	Number	Monthly Change (%)	Annual Change (%)	Percentage of total
	Nov09	Oct09 – Nov09	Nov08 - Nov09	Nov 09
A : Agriculture, hunting and forestry	47	0.0%	2.2%	0.2%
B : Fishing	0	-	-	0.0%
C : Mining and quarrying	4	100.0%	300.0%	0.0%
D : Manufacturing	604	-2.9%	10.4%	2.7%
E : Electricity, gas and water supply	84	147.1%	460.0%	0.4%
F : Construction	338	-20.8%	-25.7%	1.5%
G : Wholesale and retail trade; repair of motor vehicles, motorcycles and personal and household goods	2,107	-10.7%	-3.2%	9.5%
H : Hotels and restaurants	789	9.6%	-20.9%	3.6%
I : Transport, storage and communication	759	-35.2%	68.7%	3.4%
J : Financial intermediation	529	60.8%	-20.1%	2.4%
K : Real estate, renting and business activities	13,644	42.5%	3.3%	61.6%
L : Public administration and defence; compulsory social security	458	-23.3%	-18.2%	2.1%
M : Education	437	6.3%	57.8%	2.0%
N : Health and social work	1,429	-4.7%	-31.3%	6.5%
O : Other community, social and personal service activities	864	38.5%	73.1%	3.9%
P : Private households with employed persons	38	52.0%	533.3%	0.2%
Q : Extra-territorial organisation and bodies	3	0.0%	200.0%	0.0%

Source: JCP Vacancies data, 2009

Significant shifts in the number of vacancies reported to JCP were experienced over time. Transport, storage and communications vacancies, for example, experienced a 35.2% monthly decrease (as mentioned above) but a 68.7% increase over the year.

Almost all occupations have seen increases in vacancies over the past month. Notable exceptions include science and technology professionals (13.8% decrease), skilled metal and electronic trades (18.3% decrease) and caring personal service occupations (8.8% decrease).

TECHNICAL NOTE

Please use caution when interpreting economic data. The data provided in the above tables is given as an indicator of unemployment trends and is reliant on accurate reporting by the DWP and JCP.

There are three areas in which caution should be especially used:

Interpretation of the figures

The JSA claimant figures are exactly those reported by JCP via DWP. However, this is not the official measure of unemployment, and is indicative only of the true level of unemployed individuals. Whilst throughout this document, reference to the JSA claimants includes 'unemployed', 'unemployment' and the 'unemployment rate', the more accurate measure of unemployment, the ILO unemployment rate, is reported quarterly in the Commission for the New Economy's Worklessness Monitor, as it is provided quarterly. As such, it is not reported here.

The difference between the two measures is important to understand. Whilst the JSA claimant count covers all JSA claimants and NIC claimants, it does not cover those individuals who are actively seeking a job, have no job and are not claiming either of these two benefits. For example, individuals that have sufficient funds to support themselves after losing a job may not wish to, or be eligible to, claim JSA. As such, they are unemployed, but are not counted in the claimant count. They would, however, be counted in the ILO unemployment rate.

Vacancy data also requires some interpretation. The figures provided by JCP are all those notified to JCP. They do not, however, cover the entirety of the vacancies in the market, and it has been estimated that JCP notified vacancies make up roughly 40% of the total number of vacancies within the economy.

Rounding of the figures

DWP round some figures when reporting to protect the anonymity of claimants; and some figures have been rounded by the Commission for the New Economy. As such, the figures in some tables may not sum. This is not due to inaccuracies.

In addition, the age and duration data for JSA claimants excludes non-computerised clerical claims, which account for around 1% of claims. The 1% difference does not make a significant difference to the figures.

Calculations by the Commission for the New Economy

Percentage changes are calculated by the Commission for the New Economy. These calculations need to be treated with caution. The base values used affects percentage increases. For example, for a small base, a small change in the claimant volume can lead to a large percentage change. This is particularly relevant at the ward level, where the addition or subtraction of just a small number of individuals can lead to large percentage increases / decreases.

Calculations are also provided for the vacancy to JSA claimant ratio. These figures take the number of claimants and vacancies together, and provide a value for how many vacancies there are in any one area for every JSA claimant in that area. These calculations are not provided by ONS or DWP, but instead are an indicative calculation provided to show the jobs to labour ratio for the unemployed in any one area.

GLOSSARY

DWP

Department for Work and Pensions.

JCP

Jobcentre Plus. JCP is a government agency supporting people of working age from welfare into work and helping employers to fill their vacancies.

Jobseeker's Allowance

Jobseeker's allowance (JSA) is the most common unemployment benefit. It is mainly paid when eligible individuals don't have a job and are looking for work, however in certain circumstances it can be claimed by individuals that are in work but working less than 16 hours a week. There are 2 types of JSA: (1) 'Contribution-based Jobseeker's Allowance' which is paid at a standard rate if individuals have paid or been credited with enough class 1 National Insurance contributions; and (2) 'Income-based Jobseeker's Allowance' which is based on individuals' income and savings and is paid at a rate based on individual circumstances. A long-term claimant is defined as someone who has claimed JSA for more than 6 months.

Wards

Wards refer to the 2003 Census Area Statistics (CAS) wards, rather than the 2005 CAS wards. This is because the 2003 wards have defined populations and working age populations. There is also a level of consistency in using these wards for continual comparison.

Working Age Population

The total number of individuals within an area that are female aged 16-59 and male aged 16-64.

SOURCES

Annual / Quarterly Change

Source: Calculations by the Commission for the New Economy;

JCP Vacancies

Source: Vacancies notified to JCP, DWP, 2009;

JSA Claimants

Source: Claimant Count – Age and Duration, DWP, 2009 – this dataset excludes non-computerised clerical claims, which constitute approximately 1% of claimants;

JSA Claimant Rate

Source: Claimant Count – Age and Duration, DWP, 2009; Resident-based Claimant Count Denominators, DWP, 2009; Calculations by the Commission for the New Economy;

Long-Term JSA Claimants

Source: Claimant Count – Age and Duration, DWP, 2009;

Short-term JSA Claimants

Source: Claimant Count – Age and Duration, DWP, 2009;

Working Age Population

Source: Resident-based Claimant Count Denominators, DWP, 2009;

Youth JSA Claimants

Source: Claimant Count – Age and Duration, DWP, 2009;